

YOUR NEAREST TRADESMART MEMBER IS:



See back page for store locations

WWW.TRADESMART.NET.AU

1 APRIL - 30 JUNE 2024



# TAX TIME MADNESS

## P/N: BMEA-H35 ONE PERSON EARTH AUGER

- 1 Person Earth Auger powered by Honda GX35
- Includes 3 Auger drills, 100mm, 150mm & 200mm
- Heavy Duty Gear box
- Honda GX 3 year warranty, Bullmax 1 year warranty



**\$1395**  
GREAT BUY!



## P/N: 382061 A60TZ 125MM X 1MM CUT OFF DISCS X 100 BUCKET



- Free of iron, sulfur and chlorine
- Short cutting times
- Minimal burr formation
- Low thermal load

**\$209<sup>00</sup>**  
GREAT BUY!



**BONUS**  
KLINGPODS

## P/N: BKK-11W 11 PIECE PROFESSIONAL KNIFE SET

- Blade made from quality stainless steel.
- Double sided sharpening stone and honing steel
- Secure EVA case with carry handle
- NSF certification

**Starrett**



**BONUS**  
2 PIECE CHEF'S  
KNIFE SET



**\$149<sup>00</sup>**  
GREAT BUY!

## P/N: SSR002 SAFETY STEP

**\$69<sup>00</sup>**  
GREAT BUY!

- 250kg safe working load
- Lightweight 3.5kg design
- Indented steps on all four sides
- Grip Tape for stability
- Complies with EN14183 Section 6



**RICHMOND**  
ROLLING SOLUTIONS

**SUPPORT LOCAL  
SHOP LOCAL**



# SHOP SMART - BUY SMART!

## WELDING ACCESSORIES

### PATRIOT TRADE WELDING HELMET



- Wide viewing area 100 x 53mm
- Shade Adjustable from 5-8/9-13
- Grinding mode
- Quad Sensors

**\$109.00**  
EA  
P/N: 700143

### BT / TECMEN PAPR FREFLOW



- Large viewing area: 107 x 75mm
- 1 / 1 / 1 / 1 Highest Optical Class
- Dual Shade Range 5-8 / 9-13
- See True Colours with "RealLens™ Technology"
- Four Independent Sensors

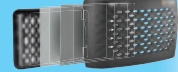
Comes with a PAPR blower unit, rechargeable Li-Ion battery, carry bag & shoulder strap

**\$1649.00**  
EA  
P/N: 703090



**CLASS LEADING P3 FILTER**

**HIGH FILTER EFFICIENCY > 99.97%**



### BT-11 GASLESS MIG WIRE

- A5.20 E71T-11
- Smooth Arc action DC-
- No shielding gas required
- Suitable for single and multiple pass applications

**\$79.00**  
EA  
GREAT VALUE



**CODE BT-11 MIG Wire**  
200360 Gasless 0.8mm x 5kg  
200361 Gasless 0.9mm x 5kg



## INTECH MADE FOR THE TRADE

**SUPERMIG WELDING GLOVES**  
**\$12.95**  
GSMIG-XL

- Manufactured from premium cowhide leather
- Cotton fabric lining
- Stitched with Kevlar® thread
- Reinforced palm, thumb and knuckle guard with welded seams
- 680mm long



**LEATHER WELDING JACKET**  
**\$79.00**  
WJFL

- Available in any size: M, L, XL, 2XL, 3XL
- Premium cowhide leather
- Press studs for front closure
- Adjustable cuffs
- Internal pocket
- Side adjusters with press studs
- Wear areas reinforced with rivets
- 730mm long
- Harness compatible flap on the back
- Stitched with Kevlar® thread



**WELDING BLANKET 1.8 X 1.8 M**  
**\$85.00**  
WB18



- Made from heavy duty cow split leather
- Stitched with Kevlar® thread to increase resistance to heat, cuts & abrasion
- Included eyelets on outer edges for securing

**CABLE COVER (TORCH COVER)**  
**\$65.00**  
CAB-TC4



- Used to protect against hot metal burns, sparks, spatter and, hence, extending the life of torch cables
- Heavy duty cowhide leather
- Easily cuts to required length
- Suit all types of cables and hoses
- Stitched with Kevlar® thread

**FULL LEATHER WELDING HOOD**  
**\$29.95**  
HOOD-FL

- Made from premium cow split leather
- Side gussets for a comfortable fit
- Hook & loop opening
- Stitched with Kevlar® thread
- Edges are fully bound



### MIG SPARE PARTS KIT FOR BINZEL STYLE TORCHES

- Common consumable parts
- Robust & compact carry/storage case that easily fits in any toolbox
- Hanging hook, to allow box to be easily displayed on pegboard or slatwall
- Images and part numbers for easy re-ordering



Weldclass

### PROMAX MG12 MINI MAGNETS

- 90°, 45°, or 60/30° angles
- Low profile, height 60mm
- Ideal for holding work pieces at multiple points
- Max pull force of approx 12kg\*
- Aluminum clad enclosure for easy cleaning



Weldclass

### PROMAX MG20 SERIES ON/OFF MAGNETS

- Heavy-duty magnets with on-off switch for easy and safe positioning and removal
- Turn magnet Off or at the mid-point when setting up, turn On when in final position
- Ideal for flat, round and square steel profiles
- Easy to clean, simply turn off and wipe



Weldclass

Part No.	Description	Price
WC-01643	Suit BZL15 Torch	\$34.95
WC-01644	Suit BZL24 Torch	\$39.95
WC-01645	Suit BZL25 Torch	\$39.95
WC-01646	Suit BZL36 Torch	\$48.95

Part No.	Description	Price
WC-01875	2-Pack	\$29.95
WC-01876	6-Pack	\$79.95

Part No.	Description	Price
WC-01885	MG22 90/45°	\$84.95
WC-01886	MG26 90°, 45° & 60/30°	\$169.00

All prices include GST. All specifications and prices are subject to change at any time without notice. E.&O.E.



# PUREGAS

- Own your gas bottle
- No rental or lease fees
- No waiting - exchange on the spot
- No contracts or admin fees
- Pay for the gas only
- No hidden or low use charges

ARGON | ARGON MIX | OXYGEN | ACETYLENE | CARBON DIOXIDE | NITROGEN

WELDING & ACCESSORIES

**ULTRA 220MP MACHINE BUNDLE**

Weldclass

INCLUDES

- Ultra 220MP Dual Pulse MIG
- Promax 650 Helmet
- 2KG Aluminium MIG Wire
- MIG Parts Kit
- Welding Gloves
- FREE Stubble Holder



Free!



Part No.	Description	Price
WC-220MPC01	220MP Combo	\$4,999.00

**FORCE 201T ULTIMATE KIT**

Weldclass

INCLUDES

- Force 201T AC/DC TIG Welder
- Promax 650 Helmet
- Platinum TG-21 TIG Gloves
- TIG Parts Kit Standard
- Platinum PX Glass Cup TIG Parts Kit Standard
- Foot Controller
- Platinum TK17 Super-Flex 4m TIG Torch



Free!

Part No.	Description	Price
WC-201TC01	201T Combo	\$2,189.00

**ULTRA 250MST MIG/STICK/TIG WELDER**

Weldclass

- Made in Europe
- 250A output Max MIG capacity 12mm steel
- Easy-to-use Interactive LCD controls
- 15A plug
- ATC technology for outstanding arc control on thin materials
- Takes 5kg or 15kg spools
- Synergic/Auto or Manual MIG
- Programs for Steel, FC, SS, Alu, Bronze
- Generator friendly (min 13kva)



Part No.	Description	Price
WC-250MST	Ultra 250MST	\$1,999.00

All prices include GST. All specifications and prices are subject to change at any time without notice. E.&O.E.

**MST188X**

- 180A output, 10A plug
- MIG / Stick / TIG welder
- Digital LED display
- DC TIG lift arc start
- Excellent arc stability
- Gas /gasless operation
- 2T / 4T trigger latching
- Stepless amperage control
- Generator safe
- Suits D100/D200 spools
- Spool gun ready

**BUNDLE CONTAINS**

- Bossweld Welder Trolley Universal
- Gasless GS MIG Wire 0.8mm 4.5kg
- Mild Steel MIG Wire 0.8mm 5kg
- Wide View Electronic Welding Helmet (Helmet Style May Vary)
- 16" Black & Gold Welding Gloves



**\$1049.00 EA**  
P/N: 699188BUNDLE

**BOSSWELD Xseries**

**MST250XT**

- Single phase 240V
- 250 Amp output
- MIG / Stick / TIG welder
- Suitable for industrial
- Digital LED display
- 4 Roll wire drive system
- Stepless adjustment control
- Gas /gasless operation
- 2T / 4T trigger latching
- Excellent arc stability
- Gun / lead hanger
- Suits 5kg & 15kg spools
- Spool gun ready



**\$1899.00 EA**  
P/N: 699250BONUS

- BONUS ITEMS**
- XR4 Welding Helmet
  - 70S-6 MIG Wire 0.9mm 15kg

**BT/TECMEN FLIP FRONT WELDING HELMET**

**\$429.00 EA**  
P/N: 703110



- Panoramic View
- See True Colours with "RealLens™ Technology"
- Large viewing area: 107 x 75mm
- 1 / 1 / 1 Highest Optical Class
- Dual Shade Range 5-8 / 9-13
- Four Independent Sensors

Purchase Powercraft 200M or Powercraft 206 AC/DC TIG below and receive a BONUS via Redemption



**\$1,989.00**  
**MULTI WELDER**

Powercraft® 200M 4-in-1 Multi-welder. 200-amp 240V input / 10amp multi-purpose 4 in 1 welder with EZYSET™ technology & easy to use LCD Screen – the only welder you will ever need. Part Number: K69074-1



**\$1,699.00**  
**AC/DC TIG**

Powercraft® 206 AC/DC TIG Welder. 200Amp output / 10amp input ACDC TIG Welder capable of HF and Lift TIG AC/DC, TIG pulse AC/DC, TIG Spot, Stick Welding. Part Number: K69079-1

**BONUS VIA REDEMPTION**

Use QR Code to redeem Pack valued at \$295.00 Includes:



www.powercraft-lincolnelectric.com.au · The Welding, Cutting, Automation and Filler Metal Experts

**\$899.00**

**GREAT VALUE!**



Powercraft® 191C 3-in-1 MIG Welder with BONUS Helmet & Accessories Box. The 191C (190Amp/10amp) is 3-in-1 MIG/STICK/DC TIG Welder using a 10 amp power supply. Upon redemption the package comes with BONUS Powercraft Electronic welding helmet, gloves and accessories (valued at \$295.00). Part Number: K69072-1E

**\$389.00 EACH**  
**SAFETY FIRST**



Viking® 3350 Series 4 Helmets with 4C Lens 4C Technology – perfect 1/1/1 optical clarity. External grind button. Innovative X6 Headgear™ improves comfort. Continuously variable 5-13 shade with internal control. Large 95 x 85 mm view size. 4 arc sensors. Solar cells with a replaceable lithium battery. Part Numbers: K3034-4 Black, K3101-4 Mojo.

**\$69.95 EACH**  
**VISIBILITY**



Red Line™ Welding Jacket FR Bright Safety Orange with Reflective Stripes. High Visibility Flame Retardant Orange welding jacket with reflective safety stripes provides prominent operator visibility which is ideal for job sites with moving vehicles or machinery. Back slot for use with height safety harness. Part Numbers: K4692-L, K4692-XL, K4692-2XL

www.powercraft-lincolnelectric.com.au · The Welding, Cutting, Automation and Filler Metal Experts



FREIGHT CHARGES MAY APPLY



# HOT DEALS STOREWIDE!

## HAND TOOLS

sutton

Superior Since 1917



- Ball End & Hex End L-Wrench Sets
- Ball End saves time by quickly funneling tool into screw
- 25° angle allows natural hand and wrist movement
- Superior Ball End strength and working angle



Size	Item #	Price Inc. GST
9pc ColorGuard™ Set – Metric	BD69499	<b>\$51.00</b>
13pc ColorGuard™ Set – Imperial	BD69637	<b>\$69.00</b>
22pc ColorGuard™ Set – Metric & Imperial	BD69600	<b>\$115.00</b>
22pc Set – Metric & Imperial	BD20199	<b>\$93.00</b>

**FAMOUS TOLEDO**

**EXCELLENCE BY DESIGN**

**Gasket Scraper Set**  
3pc 280mm  
**301278**

- Removes old gaskets, silicone sealants, gasket residue, carbon, ingrained dirt, etc.
- Blade widths: 20, 25, 40mm



**\$29<sup>00</sup>**  
GREAT VALUE!

**Carbide Scraper Set**  
2pc 210mm  
**301699**

- Scrape and remove gasket, sealant and sticky or thick adhesive compound applications



**\$79<sup>00</sup>**  
GREAT VALUE!

**Scraper & Hook Set** 5pc  
**301008**

- Suitable for automotive, industrial and hardware applications
- Scraping, scribing, marking, picking and seal removal



**\$50<sup>00</sup>**  
GREAT VALUE!

**Stainless Steel Scraper Set** 3pc  
**301651**

- General purpose 30 & 50mm chisel and 30mm bent scraper
- Length: 220mm



**\$59<sup>95</sup>**  
GREAT VALUE!

PROFESSIONAL TOOLS  
**HIT**

**MADE IN JAPAN**

**Ratchet Pipe Cutter**

**HITVPC42**

- Ratchet shear easily cuts PVC & other plastic pipe Ø42mm
- Includes cutting guide



**\$75<sup>00</sup>**  
GREAT VALUE!

**Steel Strap Cutter**  
Sliding Handle 600mm

**HITSS600SL**

- Drop forged heat treated alloy steel blades
- Capacity: 51 x 1.3mm or 32 x 1.2mm double



**\$249<sup>00</sup>**  
GREAT VALUE!

**Concrete Mesh Cutter** 800mm

**HITRCA800**

- Specially designed for cutting extra hard steel concrete mesh
- Small cutting head provides easy access into restricted spaces



**\$256<sup>00</sup>**  
GREAT VALUE!

**Wire Rope Cutter**  
710mm

**HITW16**

- Cuts soft and hard cable, wire rope, ACSR cable
- Extra-long handles provide enough leverage to cut through wire rope up to Ø16mm



**\$159<sup>00</sup>**  
GREAT VALUE!

**KINCROME**

**Iron Pipe Wrench**

- 350mm [14"] PN: K040122
- 450mm [18"] PN: K040123
- 600mm [24"] PN: K040124



- > Heavy-duty cast iron construction for durability & longevity
- > Floating hook jaw design allows ratcheting function
- > Overbite jaw for larger gripping surface
- > Hardened jaws for extended tooth & grip durability

**Aluminium Pipe Wrench**

- 350mm [14"] PN: K040132
- 450mm [18"] PN: K040133
- 600mm [24"] PN: K040134



- > Heavy-duty & lightweight cast aluminium construction for durability and portability
- > Floating hook jaw design allows ratcheting function
- > Overbite jaw for larger gripping surface
- > Hardened jaws for extended tooth & grip durability

**\$69.00**  
GREAT DEAL!

**3PC 275mm Long Reach Plier Set**  
PN: K4254



- > Designed to easily access confined areas
- > Long handles for higher leverage, control & grip
- > Machined jaws for a secure grip in all conditions
- > Flush rivets for strength with a narrow profile

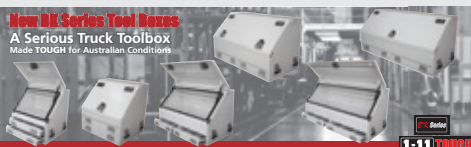
**\$79.00**  
GREAT DEAL!

**2PC 325mm Extra-long Reach Plier Set**  
PN: K4258



- > Double pivot allows for one handed use
- > Wider jaw opening with less handle motion
- > Extra-long for ultimate access in confined areas
- > Flush rivets for strength & a narrow profile

**New BK Series Tool Boxes**  
A Serious Truck Toolbox  
Made TOUGH for Australian Conditions



**New BK Series Tool Boxes**  
A Serious Truck Toolbox  
Made TOUGH for Australian Conditions



**LONGREACH STEEL TOOL BOXES**



**HAND TOOLS**

**DUAL ACTION**  
Multi-Purpose Sockets

**\$159.00**  
BONUS DEAL

**SURETORQ®**  
27 PCE RATCHETING WRENCH & BIT SET

Part No: 10043102 + Part No: 04102703

**31 PCE METRIC SET**

- 14 Pce Metric Standard: 4mm-15mm
- 14 Pce Metric Deep: 4mm-15mm
- 72 Tooth Ratchet Handle
- 50mm & 150mm Extension Bar
- Blow-Mold Case

6 1/4"

**IMPACT-RATED**  
TOOL RATED

**\$229.00**  
BONUS DEAL

**SURETORQ®**  
24 PCE AUTOMOTIVE KIT

Part No: 10045302 + Part No: 04102402

**53 PCE METRIC & IMPERIAL SET**

- 10 Pce Imperial Standard: 3/16"-9/16"
- 10 Pce Imperial Deep: 3/16"-9/16"
- 14 Pce Metric Standard: 4mm-15mm
- 14 Pce Metric Deep: 4mm-15mm
- 72 Tooth Ratchet Handle
- 50mm, 100mm & 150mm Extension Bar
- 150mm Wobble Spinner Handle
- Blow-Mold Case

6 1/4"

**THIN WALLED**  
Engineered for precision in tight spaces

**\$199.00**  
BONUS DEAL

5 PCE ADAPTER SET

Part No: 10143501 + Part No: 49010501

**35 PCE METRIC SET**

- 16 Pce Metric Standard: 7mm-22mm
- 16 Pce Metric Deep: 7mm-22mm
- 72 Tooth Ratchet Handle
- 75mm & 150mm Wobble Extension Bar
- Blow-Mold Case

6 3/8"

**MULTI-PURPOSE SOCKETS**  
Designed for both impact & hand tool use

**\$369.00**  
BONUS DEAL

5 PCE ADAPTER SET

Part No: 14244001 + Part No: 49010501

**40 PCE METRIC & IMPERIAL SET**

- 18 Pce Metric: 10mm-32mm
- 15 Pce Imperial: 3/8"-1-1/4"
- 24 Tooth Ratchet Handle
- 1/2" Dr Universal Joint
- Blow-Mold Case
- 250mm & 125mm Wobble Extension Bar
- 14mm, 16mm & 21mm Magnetic Spark Plug Socket

12 1/2"

**KINCROME**

**\$99.00**  
GREAT VALUE!

**Combination Spanner Set 12 Piece - Metric**

PN: K3181



- > 8-19mm, Ring and jaw offset at 15°
- > Manufactured from hardened & tempered Chrome Vanadium Steel
- > Spanners with thick walls & long handles for increased leverage
- > Thinner head for hard to reach fasteners

**\$119.00**  
GREAT VALUE!

**Combination Spanner Set 10 Piece - Imperial**

PN: K3046



- > Sizes: 1/4, 5/16, 3/8, 7/16, 1/2, 9/16, 5/8, 11/16, 3/4, 15/16"
- > Ring and jaw offset at 15°
- > Manufactured from hardened & tempered Chrome Vanadium Steel
- > Thinner head for hard to reach fasteners

**\$299.00**  
GREAT VALUE!

**Combination Spanner Set 25 Piece - Metric**

PN: K3047



- > Sizes: 6-28, 30, 32
- > Ring and jaw offset at 15°
- > Manufactured from hardened & tempered Chrome Vanadium Steel
- > Spanners with thick walls & long handles for increased leverage

**MVRK PIRANHA**

**MULTI FUNCTION INDUSTRIAL SNIPS**

Industry leading premium quality stainless steel micro serrated blades. Precision ground and honed.

Optimised geometry to cut paper and card, kevlar, carbon and glass cloth, fabric, leather, carpet, linoleum, wire, cable, thin sheet metals, rubber, strapping, sarking, lightweight mesh, plastic sheet, flashing and other tough materials.

Ambidextrous with dual sided, quick release thumb lock. Durable soft grip chemical resistant handles.

**THESE SNIPS DO IT ALL!**

- 1003-MF200 200mm Stainless Steel Snips
- 1003-MF200HT 200mm High Tensile Stainless Steel Snips
- 1003-MF230 230mm Stainless Steel Snips

**\$24<sup>95</sup>**  
1003-MF200



**\$38<sup>95</sup>**  
1003-MF200HT



**\$34<sup>95</sup>**  
1003-MF230




**sutton**

Superior Since 1917

**LOCK JAW** Self-Adjusting Locking Pliers make jobs faster and easier.

**\$68<sup>00</sup>**  
INC GST  
P/N: L2190225

**225mm Welding Clamp**

- Self-Adjusting mechanism for one-handed operation.
- 41mm Jaw Opening



**\$50<sup>00</sup>**  
INC GST  
P/N: L2200275

**275mm Table C-Clamp**

- Self-Adjusting mechanism for one-handed operation.
- 90mm Jaw Opening



**\$33<sup>00</sup>**  
INC GST  
P/N: L2210205

**205mm Sheet Metal Welding Clamp**

- Spreads the clamping pressure to avoid damage on soft materials
- \*Not self-adjusting automatic



**\$40<sup>00</sup>**  
INC GST  
P/N: L2210250

**250mm Sheet Metal Welding Clamp**

- Spreads the clamping pressure to avoid damage on soft materials
- \*Not self-adjusting automatic



A family business built upon  
**TRUST, INNOVATION**  
**QUALITY & RELIABILITY**



# SHOP SMART - BUY SMART

## HAND TOOLS & MEASURING

### NYLON HAMMER WITH PLASTIC HANDLE

- Worn faces can be quickly replaced BY HAND providing minimum down time.
- All faces are one-piece mouldings.
- There are no metal pegs which can damage the workplace when worn.
- Serrations in the metal head prevent faces loosening in use
- Faces have a shoulder for extra strength and to prevent fracture from misdirected blows.



FROM  
**\$51<sup>00</sup>**  
GREAT VALUE!

**Also Available:**  
 TH710 - 445g 32mm Face (1lb) \$51.00  
 TH712 - 650g 38mm Face (1-1/2lb) \$65.00  
 TH714 - 850g 44mm Face (2lb) \$65.00  
 TH716 - 1230g 50mm Face (2-3/4lb) \$86.00

**Tasks:** UPVC, Window Manufacture & Installation, Brewery Furniture, Shop fitting & Partitioning

**Trades/Industries:** Construction, Crafts or DIY.

### COPPER HAMMER WITH WOODEN HANDLE

- Cast-Iron head of extra heavy construction fitted with two electrolytic copper faces and wood handle.
- Ideal for Heavy-duty hammering where SAFE blows of maximum weight are required.



FROM  
**\$104<sup>00</sup>**  
GREAT VALUE!



**Also Available:**  
 TH310 - 830g #1- 32mm Face (2lb) \$104.00  
 TH312 - 1260g #2- 38mm Face (2-3/4lb) \$149.00  
 TH314 - 1940g #3- 44mm Face (4lb) \$173.00  
 TH316 - 2830g #4- 50mm Face (6-1/4lb) \$273.00

**Tasks:** Automotive Assembly & Repair

**Trades/Industries:** Construction, Metal work, Crafts, Agriculture/forestry, Maintenance/Repair/Overhaul.

Made Tough Since 1936

## MUMME TOOLS

mummetools.com.au



**Hexagon Crowbars**

Used for digging holes, breaking up rocks and concrete  
 Accurately ground and sharpened point end is ideal for breaking up rock

1800 x 25mm	SKU: 5CB180025	\$79.00
1800 x 30mm	SKU: 5CB180030	\$109.00

**Fencing Bars**

Used for digging holes, breaking up clay and cutting through tree roots  
 Finely ground and sharpened chisel end

1800 x 30mm - Hexagon	SKU: 5FB180030	\$99.00
1800 x 27mm - Round	SKU: 5FB180025	\$110.00

Made Tough Since 1936

## MUMME TOOLS

mummetools.com.au



**Punch & Chisel Set**

6 Piece

Set Components:  
 4, 6mm Long Pin Punch  
 6.5mm Heavy Duty Centre Punch  
 8mm Starter Drift  
 12, 19mm Alloy Cold Chisel

SKU: 4PCSET6

PRICED FROM  
**\$79<sup>00</sup>**  
GREAT VALUE!

**Sledge Hammers**

A well balanced versatile sledge hammer for building, construction, mining & demolition work

1.8kg (4lb)	SKU: 9HSSGFH1.8	\$37.95
3.15kg (7lb)	SKU: 9HSSGFH3.5	\$69.00
4.5kg (10lb)	SKU: 9HSSGFH4.5	\$84.00
6.3kg (14lb)	SKU: 9HSSGFH6.3	\$94.00

STEEL HEAD  
FIBRE GLASS HANDLE

**Wire Rope Punches**

Softened striking face combined with a urethane ring reduces the likelihood of chipping from missed hits

Size: 13mm	SKU: 7WRP13
Size: 16mm	SKU: 7WRP16
Size: 19mm	SKU: 7WRP19
Size: 22mm	SKU: 7WRP22

STEEL HEAD

PRICED FROM  
**\$167<sup>00</sup>**  
HOT BUY!

## ACCUD

### Professional Measuring Instruments

#### FRACTIONAL IMPERIAL IP54 CALIPER

Resolution: 0.01 mm / 0.0005" / 1/128"  
 Accuracy: ± 0.03 mm

• Display Modes: Fraction Imperial, Decimal Imperial & Metric

P/N: AC-113-006-11 P/N: AC-113-008-11 P/N: AC-113-012-11

**\$139**  
0-150 MM

**\$179**  
0-200 MM

**\$286**  
0-300 MM



#### DIGITAL DEPTH CALIPER



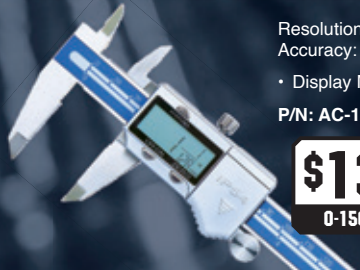
Resolution: 0.01 mm / 0.0005"  
 Accuracy: ± 0.03 mm

P/N: AC-171-008-11 P/N: AC-171-012-11 P/N: AC-171-020-11

**\$187**  
0-200 MM

**\$414**  
0-300 MM

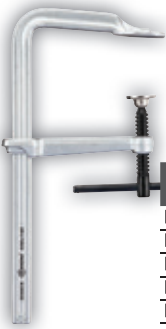
**\$717**  
0-500 MM



# HOTTEST DEALS!

## HAND TOOLS & TOOL KITS

**Ehoma**  
Clamping Solutions By **FTM**®



### FORGED STEEL F CLAMPS

- Premium quality forged steel clamps
- Tempered & hot forged steel
- Nickel & chrome plating

Part No.	Span X Depth	Clamping Force	Price
EC-G16CS	160x80mm	300kg	\$44.00
EC-G20CS	200x100mm	450kg	\$56.00
EC-G25CS	250x120mm	550kg	\$69.00
EC-G30CS	300x140mm	670kg	\$89.00
EC-G40CS	400x175mm	1000kg	\$115.00

**Ehoma**  
Clamping Solutions By **FTM**®



### HEAVY-DUTY FORGED STEEL F CLAMPS

- Larger rail sizes 30x15mm
- For heavy duty applications
- Changeable clamping heads
- Socket drive handle

Part No.	Span x Depth	Clamping Force	Price
EC-GS30C	300x140mm	1200kg	\$155.00
EC-GS40C	400x120mm	1200kg	\$169.00
EC-GS60C	600x120mm	1200kg	\$195.00

**Ehoma**  
Clamping Solutions By **FTM**®



### QUICK ACTION FORGED STEEL F CLAMPS

- Ratchet type lever prevents overloading & resists vibration
- For high pressure, fast action clamping purposes

Part No.	Span x Depth	Clamping Force	Price
EC-G20L	200x100mm	350kg	\$99.00
EC-G30L	300x140mm	500kg	\$145.00
EC-G40L	400x120mm	550kg	\$155.00

KINCROME

**\$2299.00**

GREAT BUY!



### 238 Piece Contour 29" 5d Chest - Blue

PN: K1941

- > 100 Piece LOK-ON™ Sockets & Accessories EVA Tray
- > 30 Piece Combination Spanners EVA Tray
- > 8 Piece TorqueMaster® Screwdriver Set
- > 33 Piece General Bit & Holder Set and more

**\$3999.00**

GREAT BUY!



### 278 Piece Contour 29" 11d - Blue

PN: K1950

- > 100 Piece LOK-ON™ Sockets & Accessories EVA Tray
- > 30 Piece Combination Spanners EVA Tray
- > 115 Piece TorqueMaster® Screwdrivers & Fastening EVA Tray
- > 11 Piece Pliers & Wrenches EVA Tray and more

**\$6999.00**

GREAT BUY!



### 545 Piece Contour 42" 17d - Blue

PN: K1958

- > 165 Piece LOK-ON™ Sockets & Accessories EVA Tray
- > 30 Piece Combination Spanners EVA Tray
- > 187 Piece TorqueMaster® Screwdrivers & Fastening EVA Tray
- > 98 Piece Hex & TORX® Fastening EVA Tray and more

KINCROME

**\$949.00**

GREAT DEAL!



### 147 Piece Cantilever Tool Kit

PN: K1618

- > 69 Piece Sockets & Accessories EVA Tray
- > 28 Piece Sockets & Accessories EVA Tray
- > 11 Piece Combination Spanners EVA Tray
- > 4 Piece Pliers EVA Tray and more

**\$1159.00**

GREAT DEAL!



### 164 Piece Cantilever Tool Kit

PN: K1620

- > 69 Piece Sockets & Accessories EVA Tray
- > 28 Piece Sockets & Accessories EVA Tray
- > 11 Piece Metric Combination Spanners EVA Tray
- > 11 Piece Imperial Combination Spanners EVA Tray and more

**\$549.00**

GREAT DEAL!



### Portable Workshop Tool Kit 150 Piece

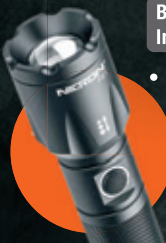
PN: K1875

- > 10 1/4" Drive Metric Sockets: 4 - 13mm
- > 18 1/2" Drive Metric Sockets: 8 - 32mm
- > 10 1/4" Drive Imperial Sockets: 5/32 - 1/2"
- > 16 1/2" Drive Imperial Sockets: 3/8 - 1.1/4" and more

**NICRON**  
LED TORCHES & HEADLAMPS

### Focusable Flashlight

P/N: F81



Brightness: 1000 Lm  
Intensity: 6500 Cd

- USB-Micro B Charge Port

**\$110**  
RECHARGEABLE!

### Twin-Beam Headlamp

P/N: H35

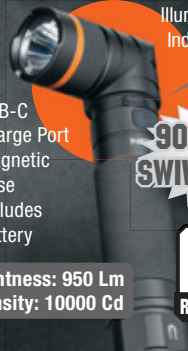
Brightness: 1600 Lm  
Intensity: 4000 Cd

**\$115**  
RECHARGEABLE!

- USB-C Charge Port
- Includes high capacity li-ion battery
- Adjust headlamp up to 120°
- Splash Proof IP65
- Anti-slip head straps ideal for helmets

### PRO TWIST Light

P/N: B71pro



Illuminated Battery Indicator Switch

- USB-C Charge Port
- Magnetic Base
- Includes battery

Brightness: 950 Lm  
Intensity: 10000 Cd

**\$94**  
RECHARGEABLE!

### Long Range Tactical Flashlight

P/N: B200

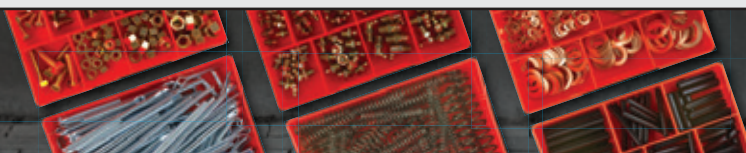
Brightness: 1000 Lm  
Intensity: 72000 Cd

- IP65 2M Water Proof
- USB-Micro B Charge Port



**\$140**  
RECHARGEABLE!

**Champion**  
FASTENERS



**ASSORTMENT KITS**  
HOLDING AUSTRALIA TOGETHER SINCE 1968

## SAFETY

### EYE PROTECTION

**MACK**

#### MACK FENDER SAFETY GLASSES

- Also available with clip-on foam gasket.
- Colours: Clear, Smoke, Amber, Blue Mirror

**NEW**

**AVAILABLE IN 2 SIZES**



CODE	DESCRIPTION	SIZES	PRICE
MKFENDER	Fender	Small, Standard	\$5.95
MKFENDERG	Fender with Foam Gasket	Small, Standard	\$9.95

#### MACK B-DOUBLE SAFETY GLASSES

Code: MKBDOUBLES0000

- Polarised outdoor smoke lens
- UV resistant



**\$44.95**  
GREAT VALUE

#### MACK MONTEREY SAFETY GLASSES

Code: MKMNTEREYPZ0000 - Polarised Green

MKMNTEREYPC0000 - Photochromatic Grey

- Ultra lightweight
- Anti-scratch lens
- Moulded nose bridge



**\$44.95**  
GREAT VALUE

### SAFETY PPE

**NINJA**

**Contego**  
TOUGH GLOVES

**FRONTIER**  
SAFETY

#### NINJA ICE HPT COLD RESISTANT GLOVE

Code: NIICEFRZRBK

- Liquid resistant, keeping hands comfortable and flexible in cold applications



**SIZES S-2XL**

**\$8.00**  
SPECIAL PRICE

#### CONTEGO JABIRU 360° C5 IMPACT GLOVE

Code: COJABMECH

- High protection all-round glove with strong impact and anti-vibration features
- Reflective material for high visibility



**SIZES M-2XL**

**\$49.95**  
SPECIAL PRICE

#### FRONTIER BROAD BRIM HARD HAT WITH RATCHET HARNESS

- Premium 6 point comfort harness
- Rear ratchet wheel for single hand fit adjustment



CODE	DESCRIPTION	PRICE
FRTGBB56RWW0000	Non-Vented	\$22.95
FRTGBB57RWW0000	Vented	\$24.95

**maxisafe**  
there's safe and there's Maxisafe.



#### Maxisafe Folding Earmuff 33dB Class 5 - Green

- Class 5 protection with SLC<sub>80</sub> rating of 33dB
- Comfortable TPU earmuff cushions
- Folding style earmuff for compact storage
- Height adjustable headband

**CLASS 5**  
SLC<sub>80</sub> 33dB

**\$29.95**  
EACH  
GREAT VALUE!

CODE: HRE664

#### Maxisafe Neck Style Earmuff 30dB Class 5 - Yellow



**CLASS 5**  
SLC<sub>80</sub> 30dB

- Class 5 protection with SLC<sub>80</sub> rating of 30dB
- Comfortable TPU earmuff cushions
- Wear with a helmet or hat

**\$26.95**  
EACH  
GREAT VALUE!

CODE: HRE663

#### Helmet Mounted Earmuffs 26dB - Class 5



**CLASS 5**  
SLC<sub>80</sub> 26dB

- Class 5 protection with SLC<sub>80</sub> rating of 26dB
- Easily mounted and adjusted
- Supplied with 25mm & 30mm accessory clips

**\$39.95**  
EACH  
HOT BUY!

CODE: HHE672

For order enquiries please contact us on 1300 062 947 or sales@maxisafe.com.au

maxisafe.com.au

**maxisafe**  
there's safe and there's Maxisafe.



#### Black Ace Disposable Nitrile Gloves Unpowdered

- Certified for protection against Fentanyl
- Low sweat technology
- Made from 100% nitrile
- Powder free and latex free
- Sizes S-XL - Box of 100
- Size 2XL - Box of 90

**\$14.95**  
BOX  
GREAT VALUE!

CODE: GNB205



#### Stimela 'Foreman' Black Gumboot with Safety Toe

- Top quality PVC/nitrile blend sole
- Steel Toe for added safety
- Resistant to oils, grease, acids and fats
- Sizes 4-14

CODE: FWG902

**\$54.95**  
PAIR  
HOT BUY!

#### Ready 2 Work Kit

##### CleanAIR Omnira Face Shield & Basic PAPR Kit

- An advanced built-in air distribution system with the highest standard in respiratory protection TH3 / NPF 500
- Outer control of the direction and intensity of the air in the helmet
- Lightweight and durable



CODE: R813100

**\$1945.00**  
KIT  
HOT BUY!

For order enquiries please contact us on 1300 062 947 or sales@maxisafe.com.au

maxisafe.com.au

**Ironclad**  
BY BRIGHTON-BEST INTERNATIONAL



THE PERFECT FIT FOR ANY JOB



**SAFETY & LIFTING**

**SAFETY STEP**

- 250kg capacity load
- Indented steps on all four sides



**\$69** INC GST  
P/N: SSR002

**ROLLING SAFETY STEP INSERT**

- Spring loaded castors
- Designed for use with Richmond safety step

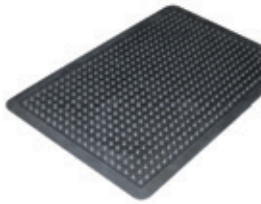


**\$44** INC GST  
P/N: SSR003

**ANTI-FATIGUE MAT BLACK BORDER**

**NEW**

600mm x 900mm



**\$39.95** INC GST  
P/N: FMR001

900mm x 1200mm

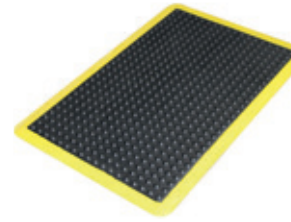
**\$69.95** INC GST  
P/N: FMR002

- Specifically designed to massage the feet
- Black flexible domed top surface

**ANTI-FATIGUE MAT YELLOW BORDER**

**NEW**

600mm x 900mm



**\$74.95** INC GST  
P/N: FMR003

900mm x 1200mm

**\$125** INC GST  
P/N: FMR004

- Specifically designed to massage the feet
- Black flexible domed top surface



**52L RECYCLABLE CRATE BLACK**

- Made from sturdy polypropylene
- 52 Litre capacity
- 650mm(L) x 410mm(W) x 275mm(H)



**\$23.95** INC GST  
P/N: SNR001RWCBLK

**240L CAPACITY GREEN WHEELIE BIN**

- Made from HDPE
- 240 Litre capacity



**\$119.00** INC GST  
P/N: WGR029

**LUG BOX (GREEN)**

- Made from sturdy polypropylene
- 66 Litre capacity
- 610mm(L) x 425mm(W) x 320mm(H)



**\$32.95** INC GST  
P/N: BXR008RWCGRN

**2 & 3 SHELF STOCK PICKER TROLLEYS**

- 945mm(L) x 650mm(W) x 750mm (H) platform dimensions
- 250kg load capacity



**\$340** INC GST  
P/N: SPR002



**\$433** INC GST  
P/N: SPR007



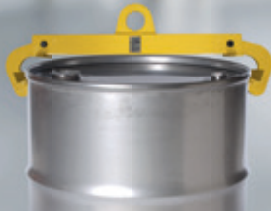
**AUSSLIFT**®

1300 100 120 | austlift.com.au

**VERTICAL DRUM LIFTER**

P/G: 144002  
W.L.L.: 500KG

**\$155.00**  
GREAT VALUE!



**WEB SLING DRUM LIFTER**

P/G: 144003  
W.L.L.: 500KG

**\$95.00**  
GREAT VALUE!



**DRUM TROLLEY HEAVY DUTY**

P/G: 145030  
W.L.L.: 600KG

**\$149.00**  
GREAT VALUE!



**AUSSLIFT**®

**SNATCH BLOCK SHACKLE HEAD**

Complies with AS/NZS 2089

P/C	Rope Dia	W.L.L.	Price
140106	13-16mm	6.0t	\$249.00
140108	16-18mm	8.0t	\$329.00
140110	18-20mm	10.0t	\$549.00



**AUSSLIFT**®

**CHAIN BLOCK W4**

Complies with AS/NZS 1418.2

P/C	Lifting	W.L.L.	Price
110005	3M	0.5t	\$129.00
110010	3M	1.0t	\$149.00
110020	3M	2.0t	\$219.00

**AUSSLIFT**®

**AUSSIE FETCH MINI CRANE**

Complies with AS/NZS 1418.11

P/G: 145080  
W.L.L.: 400KG

**\$1999**  
GREAT VALUE!



# HOT DEALS STORE WIDE

## LADDERS & WHEELS



### AUSTRALIA'S MOST TRUSTED LADDER

#### DOUBLE SIDED A-FRAME ALUMINIUM INDUSTRIAL 180KG HEAVY DUTY



**NEW**

**\$229**

SM004-HD (1.2M/4FT)



**\$529**

SM008-HD (2.4M/8FT)



**ALSO AVAILABLE**  
 SM003-HD (0.9M/3FT) \$159  
 SM006-HD (1.8M/6FT) \$339  
 SM010-HD (3.0M/10FT) \$829  
 SM012-HD (3.6M/12FT) \$989

#### GORILLA ALUMINIUM EXPANDA SCAFF

**\$1,495**

GS-01 CORE PACK



The Expanda Scaffold incorporates a unique design that allows you to expand up and out by adding additional free standing core packs, making it incredibly versatile.

**\$977**

GS-01A RISER PACK



**ALSO AVAILABLE**  
 GS-02 SCAFFOLD OUTRIGGER PACK \$459  
 GS-03 SCAFFOLD JOINER PACK \$376

#### EXTENSION LADDER ALUMINIUM 150KG INDUSTRIAL



**\$469**

EL12/21-IH (12-21FT)

**ALSO AVAILABLE**  
 EL8/13-IH (8-13FT) \$319  
 EL10/17-IH (10-17FT) \$389  
 EL14/25-IH (14-25FT) \$717

#### MULTI-PURPOSE LADDER ALUMINIUM 120KG INDUSTRIAL

**NEW**

**\$309**

MM11-I (1.07-3.3M)



**ALSO AVAILABLE**  
 MM15-I (A-FRAME 1.2-2.1M EXTENSION 2.7-4.5M) \$359  
 MM19-I (A-FRAME 1.7-2.8M, EXTENSION 3.3-5.8M) \$549

#### FORMWORK PROPS GALVANISED STEEL

**\$139**

PROP-198 (1.98-3.35M)

Gorilla Formwork Props are a must for almost every building site. The adjustable load bearing product is ideal for supporting ceilings, walls and other structures.

PROP-120 WLL: 2300kg (1.2m) 2600kg (1.8m)  
 PROP-198 WLL: 3000kg (1.98m) 1400kg (3.35m)  
 PROP-230 WLL: 1300kg (2.3m) 2600kg (3.35m)

**ALSO AVAILABLE**  
 PROP-120 (1.2-1.8M) \$106  
 PROP-230 (2.3-3.8M) \$181



#### 200MM TUBE TYPE SCAFFOLD CASTOR



- Polyurethane Tyred Cast Iron Centred
- 700kg load capacity

**\$115** INC GST

P/N: S883B

#### 200MM ADJUSTABLE THREAD TYPE SCAFFOLD CASTOR



- Polyurethane Tyred Cast Iron Centred
- 700kg load capacity

**\$155** INC GST

P/N: S879B

#### 200MM POLYURETHANE TYRED NYLON CENTRED WHEEL



- Suits scaffold castors
- 700kg load capacity

**\$49.95** INC GST

P/N: PU8079-75



- Complies with AS 1892 standards
- 150kg safe working load

#### 2 STEP LADDER

- 810mm ladder height



**\$199** INC GST

P/N: CSL200

#### 3 STEP LADDER

- 1275mm ladder height



**\$289** INC GST

P/N: CSL300

#### 4 STEP LADDER

- 1500mm ladder height



**\$409** INC GST

P/N: CSL400



**MATERIALS HANDLING**



**BEAVER SAFETY CARGO NETS**

- Multiple webbing loops and eyelets
- 4x Tie Ropes and 4x Cam Buckles
- UV stabilised and tightly woven mesh
- Integrated D rings to assist holding down
- For trailers, utes, boats, 4WD's and trucks
- Convenient heavy duty storage bag



CODE	DESCRIPTION	PRICE
NETSYS1	Small (2.46m x 2.46m)	\$399.00
NETSYS2	Medium (2.8m x 2.84m)	\$406.00
NETSYS3	Large (2.8m x 3.44m)	\$489.00

**BEAVER WEB DOG 50MM RATCHET ASSEMBLY**

- Code: 348000WF
- Fitted with 8mm grab hooks
  - 1m of 50mm heavy duty webbing



**\$125.00**  
GREAT VALUE

**BEAVER MULTIPURPOSE HAND RATCHET & STRAP**

- Low strain & long life
- Durability demanded in flatbed tiedown situations



CODE	DESCRIPTION	PRICE
RTD055PL	50mm x 9m, LC 2500kg, c/w hook & keeper	\$19.95
349035RB	35mm x 6m, LC 1500kg, c/w hook & keeper	\$17.95
349025RB	25mm x 5m, LC 500kg, c/w hook & keeper	\$15.95
349025RSB	25mm x 4m, LC 450kg, c/w S Hooks	\$16.95

**BEAVER TRUCKERS SILVER LASHING ROPE 10MM**

- Code: 347010HD
- Synthetic polyethylene fibres



**\$119.00**  
SPECIAL PRICE

BOX OF 10

**MATERIALS HANDLING**



**BEAVER GRADE 70 RATCHET LOADBINDER**

- Grade 70
- With winged eye grab hooks
- Complies to AS/NZS 4344



CODE	DESCRIPTION	PRICE
344008	7-8mm, LC 3800kg	\$67.00
344010	10mm, LC 6000kg	\$60.00
344013	13mm, LC 9000kg	\$105.00

**BEAVER JAX BOTTLE JACK**

- Wide base for stability & strength
- Heavy duty, steel construction
- Available in a variety of sizes: 4 to 20 tonnes capacity



CODE	DESCRIPTION	PRICE
JAX004	Jack Bottle 4t Black Jax	\$79.00
JAX006	Jack Bottle 6t Black Jax	\$85.00
JAX008	Jack Bottle 8t Black Jax	\$115.00
JAX010	Jack Bottle 10t Black Jax	\$135.00
JAX015	Jack Bottle 15t Black Jax	\$150.00
JAX020	Jack Bottle 20t Black Jax	\$220.00

**BLACK RAT GRUNT 12V AIR COMPRESSOR**

Code: GC400



**\$149.00**  
GREAT VALUE

HUGE AIR FLOW TO 150psi

**BLACK RAT 4WD TOWING KIT**

Code: 342309BK



**\$210.00**  
GREAT VALUE

**BLACK RAT 4WD SAFETY RECOVERY KIT**

Code: 342350BK



**\$395.00**  
GREAT VALUE

INCLUDES CARRY BAG

**6" Solid Wheel**

350KG Jockey Wheel  
Swivel U Bolt Clamp

**\$59.95**  
#R2112AC



**6" Mag Wheel**

350KG Jockey Wheel  
Swivel U Bolt Clamp

**\$89.00**  
#R2112A



**8" Mag Wheel**

350KG Jockey Wheel  
Swivel U Bolt Clamp

**\$89.00**  
#R2124A



**10" Mag Wheel**

350KG Jockey Wheel  
Swivel U Bolt Clamp

**\$105.00**  
#R2114UB



**Bearing Kit**  
With Seal, Cap and Split Pin



**\$19.95** #R1960 (LM)  
**\$19.95** #R1961 (SLM)

**Marine Bearing Kit**  
With Seal, Cap and Split Pin



**\$21.95** #R1960M (LM)  
**\$21.95** #R1961M (SLM)

**KOYO Bearing Kit**  
With Seal, Cap and Split Pin



**\$29.95** #R1969B (LM)  
**\$29.95** #R1970B (SLM)

**LED Tail Lights**  
Left & Right with Number Plate Light  
\*Sold Separately



**\$26.95** #R4122LEDLH  
**\$31.95** #R4122LEDRH

TradeSmart MATES RATES!

ALL STATES  
**TRAILER SPARES**  
Tuff Stuff



LUBRICATION & REELS



# WORKSHOP SPECIALIST ESSENTIALS



**\$99.00**  
GREAT VALUE!



**600A ALEMLUBE 450C LEVER GREASE GUN**

- Grease pressures of up to 12,000psi (828bar)
- Delivers up to 1.6g of grease per stroke
- Ever-Flow System enables the gun to be used with thick/tacky greases up to NLGI2
- High pressure, high volume option
- Bulk filling capacity of 500g



**\$599.00**  
GREAT VALUE!



**G10040N EL SERIES 450G 18V CORDLESS GREASE GUN**

- Generates grease pressures of up to 10,000psi (690bar)
- Capable of delivering up to 80g/min
- 25 minutes continuous working time
- Supplied with two Li-ion batteries
- Carry case included



**\$1,658.00**  
GREAT VALUE!



**424150 SAMOA 20KG MOBILE GREASE KIT**

- High pressure 55:1 ratio pump
- Up to 7,950psi (548bar) grease pressure
- Cast alloy dual cylinder air motor
- Built in filter protects against pump/tube contamination
- Suitable for use with thick tacky greases



**52000 ALEMLUBE 12V BATTERY DIESEL PUMP KIT**

- Capable of flow rates of up to 50L/min
- Includes 4m of antistatic fuel delivery hose, 2m of battery cable, a stainless steel & brass fuel filter and an automatic shut-off nozzle
- Maximum head capacity of 15m
- Self priming vane pump includes a built-in bypass

**\$615.00**  
GREAT VALUE!



**\$69.00**  
GREAT VALUE!

**52007 ALEMLUBE 1" MANUAL DIESEL FUEL NOZZLE**

- Capable of flow rates up to 150L/min
- Ideal for farm tank applications
- Suitable for gravity feed applications & applications with pressures of up to 140psi (10bar)

**FA2 ALEMLUBE 1" FUEL FILTER**

- Fuel filter suitable for use with gravity feed fuel tanks and with hand, air or electric drum pumps
- Features a 10 micron fuel filter element, a drain cock and a replaceable clear plastic bowl
- 1" BSP(f) inlet/outlet
- Replacement elements readily available



**\$179.00**  
GREAT VALUE!

**CR30050 EL SERIES 240V 10AMP ELECTRIC CABLE REEL**

- Supplied with 20m of 3 x 1.5mm<sup>2</sup> cable
- 1,000W, when uncoiled 2,000W
- Thermal overload protection
- CE Approved & Australian Industry Standards compliant

**\$399.00**  
GREAT VALUE!



Also available:  
**CR30060**

**\$450.00**  
GREAT VALUE!

**EVPR2405 ALEMLUBE 240V EV CHARGING HOSE REEL**

- 5m charging cable with Type 2 power supply connector
- Type 2 vehicle connector supplied standard
- Circuit breaker manually restorable
- Type 1 connector available on request

**\$2,370.00**  
GREAT VALUE!



**L60040PA ALEMLUBE 600L TANK LOCKABLE DIESEL PUMP KIT**

- Australian made, heavy duty, robustly constructed polyethylene tank
- 600L capacity
- Flow rates of up to 40L/min
- Built in nozzle holster
- Unique user friendly design with lockable lid to aid fuel and dispensing kit security
- Dispensing kit consists of a 12V pump, 4m antistatic fuel delivery hose, 2m battery cables and automatic nozzle

**\$1,999.00**  
GREAT VALUE!



On Australian made tanks

Also available:  
**L45040PA**

**\$1,799.00**  
GREAT VALUE!

**L20040PA**

**\$1,325.00**  
GREAT VALUE!

**L10040PA**

**\$1,215.00**  
GREAT VALUE!

On Italian made pumps

\*Applies to the vast majority of Alemlube products unless indicated otherwise



AUSTRALIA'S FIRST CHOICE FOR QUALITY HOSE, VALVES AND FITTINGS





**MDT 300L**  
**\$1589**  
GREAT VALUE!



**MDT 600L**  
**\$1920**  
GREAT VALUE!



**MDT 800L**  
**\$3099**  
GREAT VALUE!



**MDT 1000L**  
**\$3190**  
GREAT VALUE!



**MDT 1200L**  
**\$3569**  
GREAT VALUE!

**POLY DIESEL TANKS**

- Equipped with premium quality 12V Electric diesel pump kit
- 300L /600L - 40 LPM pump
- 800L/1000L/1200L - 85 LPM pump
- Automatic nozzle
- Lockable lid for security



**TANK 15 YEARS**  
MACNAUGHT WARRANTY

**PUMP 5 YEARS**  
MACNAUGHT WARRANTY

**FREE** **m** macnaught **K29-01** (VALUED AT RRP \$155) WITH ANY MDT TANK



**C1 ELECTRICAL CABLE REELS (240V)**

- Automatic spring rewind
- Thermal overload protection
- 1.5 metre feed cable
- SAA: AS/NZS 3105 Compliant



**C1EC10A20D-AU**  
10A x 20m

**\$430**  
GREAT VALUE!

**C1EC15A20D-AU**  
15A x 20m

**\$465**  
GREAT VALUE!

**2 YEARS**  
MACNAUGHT WARRANTY

**C1 BARRIER REELS**

- Tape Lock Off function to maintain barrier tape tension
- Magnetic tape anchor point
- 48mm x 25m Tape
- Woven Tape



**C1BRW5025Y**  
Red/White Tape

**\$255**  
GREAT VALUE!

**C1BYB5025Y**  
Yellow/Black Tape

**\$255**  
GREAT VALUE!

**2 YEARS**  
MACNAUGHT WARRANTY

**R3 COMPRESSED AIR/WATER REEL**

- Pressure Rating - 250 psi
- Inlet/Outlet  
AW320B - 3/8"BSP (F) / 1/4"BSP (M)  
AW420B - 3/8"BSP (F) / 3/8"BSP (M)
- Reinforced PVC hose



**AW320B-01**  
3/8" x 20m

**\$369**  
GREAT VALUE!

**AW420B-01**  
1/2" x 20m

**\$419**  
GREAT VALUE!

**10 YEARS**  
MACNAUGHT WARRANTY

**R3 OXY/ACET REEL**

- Pressure Rating - 175 psi
- 5mm twin hose x 15m
- Inlet/Outlet - Gas Thread/Gas Thread
- Reinforced Rubber hose (AS1335)



**OA215B-04**  
5mm x 15m

**\$615**  
GREAT VALUE!

**10 YEARS**  
MACNAUGHT WARRANTY

**LEVERGUN®450G GREASE GUN K45-01**

- Delivery pressure up to 82,750 kPa (12,000 psi)
- Up to 1.5g per shot
- Maximum viscosity - Up to NLGI 2
- Supplied with 150mm steel extension and KY coupler



**\$119**  
GREAT VALUE!

**10 YEARS**  
MACNAUGHT WARRANTY

**P3 POWERLUBE™ 20KG GREASE KIT P3-01C**

- 50:1 Ratio Pump
- KY Supergrip coupler
- ZSB high pressure swivel
- Supplied with Pump, lid, follower, 4m high pressure grease hose and B2 Booster gun



**\$1499**  
GREAT VALUE!

**10 YEARS**  
MACNAUGHT WARRANTY

**ALL PURPOSE OIL TRANSFER PUMP MAOP20**

- Suitable for oils up to SAE140 / ISO680 viscosity
- Suits between 20L - 25L drums
- Delivers up to 75ml per stroke



**\$67**  
GREAT VALUE!

**2 YEARS**  
MACNAUGHT WARRANTY

**ROTARY VANE PUMP RVP-01**

- Suits both 205 & 60 L drums via sliding bung adaptor
- Delivers up to 20 LPM (in both directions)
- Suitable for Diesel, Kerosene and oils up to SAE90



**\$319**  
GREAT VALUE!

**10 YEARS**  
MACNAUGHT WARRANTY

**MULTI-PURPOSE GEAR OIL PUMP C7-01**

- Compatible fluids - kerosene, two stroke mix, lubricating oils up to SAE140
- Pump output: 100 ml/stroke
- Compatible with most drum sizes from 15 -25 L



**\$183**  
GREAT VALUE!

**10 YEARS**  
MACNAUGHT WARRANTY

Terms & Conditions: \*Stock Subject to availability. While stocks last. Warranty subject to Macnaught Terms & Conditions. ©Macnaught Pty Ltd, 2024.

macnaught.com



Engineered To Perform  
hi-tecoils.com.au



## SEALANTS & ADHESIVES



**ALL COLOURS**  
**\$7.95**

### RS-60 ALL-IN-ONE SILICONE SEALANT

- High performance in any environment
- Highly adhesive & extremely durable
- UV resistant
- Waterproof formula
- Primed or un-primed surfaces

**ANTI-FUNGAL**

**RESISTANT TO MOULD**

**NO FADING  
NO CRACKING  
NO SHRINKING  
NO ABRASION**

**CONSTRUCTION GRADE • LIFETIME PERFORMANCE**

### Rapidstick

300ML CARTRIDGE

<b>BLACK</b>	8-RS60BK-300
<b>CLEAR</b>	8-RS60CL-300
<b>GREY</b>	8-RS60GY-300
<b>SILVER</b>	8-RS60SV-300
<b>WHITE</b>	8-RS60WT-300



### LIQUID-FIX CONSTRUCTION ADHESIVE

**JUST LANDED!**  
**\$4.95**

- Adheres to wet or dry timber
- Weather & mould resistant
- Non-sagging with high adhesion
- Odourless
- Environmentally safe
- Low VOC content
- No toxicity

**NON-FLAMMABLE**

### Rapidstick

300ML CARTRIDGE

**BEIGE** 8-RS50BG-300

**STRONG-AS-NAILS & IMPACT RESISTANT**  
**HOLDS UP TO 597 PSI**  
MEETS AUST STANDARD AS 2329-1999



## Rapidstick™

PRICED FROM...  
**\$22.95**

## GASKET SEALANTS



### 8515 • FLEXIBLE BONDING FOR MACHINED SURFACES

- Med strength gel for gaps up to .40mm
- Fast curing for formed-in-place repairs
- Excellent for pumps, thermostats, compressors & transmission housings

SIZE	PART #	INC. GST
50ml Tube	8515-50	\$22.95
250ml Tube	8515-250	\$95.00
300g Cartridge	8515-300	\$105.00

**FAST CURING**

MEDIUM STRENGTH GEL  
-54°C TO +148°C

SEALS & FILLS IRREGULAR SURFACES

IMMEDIATE LOW PRESSURE RESISTANCE

### 8518 • SEMI-FLEX BONDING ON CONTAMINATED SURFACES

- Med strength gel for gaps up to .50mm
- High oil, grease, and chemical resistance
- Ideal for cast iron, steel, and aluminium flanges

SIZE	PART #	INC. GST
50ml Tube	8518-50	\$23.95
250ml Tube	8518-250	\$95.00
300g Cartridge	8518-300	\$105.00



## Rapidstick™ THREAD SEALANTS

50ML TUBES  
**\$23.95**



### 8567 • HIGH LUBRICATION & COARSE FITTINGS

- For all metal types, incl. s/steel, aluminium, & galvanised metals.
- Temps up to +204°C
- Contains PTFE
- Colour: White

SIZE	PART #
50ml	8567-50

### 8577 • POTABLE WATER & GASES

- Soft setting paste
- Class III methacrylate ester
- Contains PTFE
- Pressures up to 2,000 kPa
- Colour: Yellow

SIZE	PART #
50ml	8577-50



AGA CERTIFIED FOR GAS



## Rapidstick™ RS-80 HI TEMP GASKET MAKER

- MOST SURFACES
- AUTOMOTIVE
- INDUSTRIAL
- MARINE
- INDOORS & OUT

**\$34.90**  
ALL COLOURS

200ML AUTO-DOSE CARTRIDGE



- New generation low odour RTV
- Neutral curing & non-corrosive - does not release acids
- For demanding applications with extreme temperatures and/or high thermal cycling
- Retains flexibility up to 300°C
- Resistant to oil, water & most chemicals
- Suitable on sensitive metals & most non-primed surfaces

<b>BLACK</b>	8-RS80BK-200
<b>RED</b>	8-RS80RD-200
<b>GREY</b>	8-RS80GY-200

**NEW!**

## Rapidstick™ INSTANT ADHESIVES

COMPATIBLE WITH ROUGH, POROUS & ACIDIC SURFACES

FAST CURING, HIGH STRENGTH BOND



### 8401 • SURFACE INSENSITIVE

- Ideal for repair applications
- Medium viscosity
- Fills gaps up to .20mm

SIZE	P/N
50g	8401-50
50g	8406-50

### 8406 • WICKING GRADE

- Rubber & metal bonding
- Low viscosity
- Fills gaps up to .05mm



THREADLOCKED AT  
**\$21.95**



## Rapidstick™ THREADLOCKERS

TOLERATES MINOR SURFACE CONTAMINATION

### 8243 • BLUE

- Medium & coarse threads
- Plated parts & stainless steel
- Non-permanent bond
- Fills gaps 6mm - 20mm

### 8263 • RED

- Large bolts & studs
- Active or passive metals
- Permanent bond
- Fills gaps up to 25mm

**GREAT CONTROLLED FRICTION & TORQUE/TENSION RATIO**

SIZE	P/N
50ml	8243-50
50ml	8263-50

CHEMICALS & PAINT

**TREFOLEX CDT CUTTING OIL**  
3063

- Superior lubricant
- Extreme pressure resistant – increases tool life and improves cutting



**\$16<sup>95</sup>**

INC GST

300g

**CRC DRY GLIDE**  
3040

- Penetrates and bonds (plates) to most surfaces
- Contains PTFE
- Extremely low co-efficient of friction



**\$17<sup>95</sup>**

INC GST

150g

**CRC NF 5-56**  
1754519

- Multi-purpose service spray that penetrates, lubricates and prevents corrosion
- Superior penetrating power



**\$21<sup>95</sup>**

INC GST

400g

**CRC NF TAC-2**  
1754520

- Ideal for mining and areas with low ventilation
- Non-conductive and Non-corrosive ensuring safety during use



**\$23<sup>95</sup>**

INC GST

400g



www.crcindustries.com.au



**CRC EMPTY PUMP SPRAYER**  
4015

- Solid sprayer with durable seals
- Continuous and adjustable spray pattern



**\$79<sup>95</sup>**

INC GST

1L

**CRC EVAPO-RUST SPRAY GEL**  
1753336

- Rust Remover Clings to surfaces
- Powerful Non-scrubbing No need to soak



**\$23<sup>95</sup>**

INC GST

500g

**CRC AEROCLEAN DEGREASER**  
5070

- Quickly dissolves grease, oil and dirt
- Cleans iron, steel, aluminium, magnesium and copper



**\$9<sup>95</sup>**

INC GST

400g

**CRC BATTERY TERMINAL PROTECTOR**  
5098

- Easy to apply aerosol
- Flexible film
- Completely encapsulates exposed surfaces



**\$14<sup>50</sup>**

INC GST

300g



www.crcindustries.com.au



**MORE COLOURS AVAILABLE**

**Dy-Mark**



**\$42<sup>95</sup>**  
1L EACH

**\$270<sup>00</sup>**  
10L EACH

**\$130<sup>00</sup>**  
4L EACH

**TREADRITE**

Slip Resistant Coating

- Ideal for interior and exterior untreated timber, concrete, primed metal and brick & clay pavers.
- Creates durable slip resistant surfaces.
- Resists cracking, peeling and exposure to petrol, oil and mild chemicals.
- Easy to apply with uniform coverage.

**MORE COLOURS AVAILABLE:**

- CLEAR - 1L P/N: 23060100, 4L P/N: 23060400, 10L P/N: 23061000
- BLACK - 1L P/N: 23060101, 4L P/N: 23060401, 10L P/N: 23061001
- YELLOW - 1L P/N: 23060105, 4L P/N: 23060405, 10L P/N: 23061005

**MORE COLOURS AVAILABLE**

**Dy-Mark**



**\$12<sup>90</sup>**  
INC GST  
EACH

**MORE COLOURS AVAILABLE:**

- GREY - P/N: 41015013
- ORANGE - P/N: 41015006
- MATT BLACK - P/N: 41015001
- GREEN - P/N: 41015004
- HAND ACTUATOR WHITE AEROSOL P/N: 41035011
- HAND ACTUATOR YELLOW AEROSOL P/N: 41035035

**3X LONGER LASTING\***

*\*Lasts up to 3 times longer than standard acrylic based line marking paints.*



**\$24<sup>95</sup>**  
INC GST  
EACH

P/N: 41025005 YELLOW  
P/N: 41025011 WHITE



**MARXMATE**  
PROFESSIONAL MARKING TOOL

**THE PERFECT DRILLING COMPANION**

FOR ELECTRICAL, PLUMBING, BUILDING AND DIY MARKING JOBS

**\$14.95**

**250+ BURSTS**  
IN EVERY PEN

USE ON DEPTHS UP TO 50mm



DRILL IT MARK IT PRESS IT

## ADHESIVES, HAND CLEANING & AIR TOOLS



### GAP FILLING EXPANDING FOAM - STRAW

- Excellent stability (no shrinkage or postexpansion)
- High filling capacity
- Good adhesion on all surfaces (except PE, PP and PTFE)
- High insulation value, thermal and acoustic
- Very good bonding properties, Freon free

500ML  
**\$9.95**  
 GREAT VALUE!  
 153470

750ML  
**\$11.95**  
 GREAT VALUE!  
 127968



### GENIUS GUN GAP FILLING EXPANDING FOAM

- Excellent stability
- High filling capacity
- Good adhesion on all surfaces
- High insulation value, thermal and acoustic
- Very good bonding properties

500ML  
**\$11.95**  
 GREAT VALUE!  
 132272

750ML  
**\$17.95**  
 GREAT VALUE!  
 130373



### GENIUS GUN FLEXIBLE INSULATION FOAM

- 3 times more flexible than standard PU foam
- Airtight (see IFT-report)
- Water Vapour Open
- Excellent stability (no shrinkage or postexpansion)
- High filling capacity
- Good adhesion on all surfaces
- High insulation value, thermal and acoustic

750ML  
**\$19.95**  
 GREAT VALUE!  
 130425



### T-REX POWER FAST GRAB

- Beach Sand 128463
- Bright White 121968
- Jet Black 124435
- Quick Silver 128462
- Steel Grey 121970

290ML  
**\$14.95**  
 GREAT VALUE!



### T-REX POWER FAST GRAB

- Clear 134912

290ML  
**\$18.95**  
 GREAT VALUE!



### T-REX POWER CRYSTAL

- Crystal 121969

290ML  
**\$17.95**  
 GREAT VALUE!



### STRONG AS NAILS SUPER GRAB (GRAB & GO PACK)

- High performance
- Super initial grab
- Cartridges made from recycled materials
- Ideally for bonding heavy materials 144902

20 X 350GM  
**\$119**  
 GREAT VALUE!



### STRONG AS NAILS FIX IT (GRAB & GO PACK)

- Multi-purpose
- High performance
- High bond strength
- Easy to gun
- Waterproof packaging
- Excellent adhesion to most building materials 144904

20 X 350GM  
**\$89.00**  
 GREAT VALUE!



### SEPTONE ELIMINATOR HAND CLEANER 4L PN: IHPE4

- Unique hydrocarbon solvent free
- Waterless, silicone free
- Removes a wide range of paints

**\$84.95**  
 4L



**\$16.95**  
 500ML

**SEPTONE ELIMINATOR HAND CLEANER 500ML PN: IHPE500**



### SEPTONE CITRA SCRUB HAND CLEANER 20KG PN: IHCS20

- Waterless, citrus based
- Contains natural scrubbers
- Removes ingrained dirt & grime

**\$179.00**  
 20KG



**\$49.95**  
 4L

**SEPTONE CITRA SCRUB HAND CLEANER 4L PN: IHCS4**

**SEPTONE CITRA SCRUB HAND CLEANER 500ML PN: IHCS500**

**\$13.95**  
 500ML



### PERMATEX 25217 FAST ORANGE PUMICE HAND CLEANER P/P 1.8L PN: PX25217

- Biodegradable, petroleum solvent free hand cleaner
- Fortified with premium skin conditions
- Fine pumice deep cleans the toughest dirt

**\$24.95**  
 GREAT VALUE!



### PERMATEX 25618 FAST ORANGE XTR HAND CLEANER P/P 3.78L PN: PX25618

- Professional grade formulation
- Advanced skin restoration conditioners protect hands against drying & cracking

**\$49.95**  
 GREAT VALUE!



### M7 1/2" AIR IMPACT WRENCH

- Lightweight, only 1.7kg
- Powerful, 1650Nm (1200ft-lb) Max Torque
- Extra heavy duty twin hammer
- Value for money, high quality & specs
- 25mm Bolt capacity



**EASY GREASE ANVIL SERIES**

**\$470.00**  
 GREAT VALUE!

M7-NC4255QH

### M7 3/4" AIR IMPACT WRENCH

- Lightweight composite body, only 1.9kg
- Low noise level, only 85dB
- Powerful, 1900Nm (1400ft-lb) Max torque!
- Compact - Only 198mm Length
- 25mm Bolt capacity



**EASY GREASE ANVIL SERIES**

**\$765.00**  
 GREAT VALUE!

M7-NC6255QH

### M7 COMPACT AIR DIE GRINDER



- Length: 155mm
- Net weight: 0.38kg
- Includes 1/4" & 1/8" collets
- Free speed: 25,000rpm
- Rated power: 0.3hp

**\$169.00**  
 GREAT VALUE!

M7-QA111B

### M7 AIR NEEDLE SCALER



- Blows per minute: 5500bpm
- Net weight: 1.3kg
- Needle size: 3x123mm (12 per set)
- Overall length: 290mm

**\$295.00**  
 GREAT VALUE!

M7-SN1288



# HOT DEALS STOREWIDE!

## COMPRESSORS

### C16

#### AIR COMPRESSOR

- Filter / regulator
- 453 Lt/min Displacement
- 328 Lt/min F.A.D.
- 3 Cylinder cast-iron pump
- 2.4kW / 3.2HP motor
- 240V, 15Amp
- 60 litre tank



**\$1790**  
TECHTOP MOTOR

### AB12

#### AIR COMPRESSOR

- Filter / regulator
- 259 Lt/min Displacement
- 189 Lt/min F.A.D.
- 2 Cylinder ABAC pump
- 1.86kW / 2.5HP motor
- 240V, 10Amp
- 50 Lt tank



**\$999**  
GREAT VALUE

### C16L-HP

#### AIR COMPRESSOR

- High pressure – 160 psi
- Filter / regulator
- 410 Lt/min Displacement
- 328 Lt/min F.A.D.
- 2.4kW / 3.2HP Techtop motor
- 240V, 15Amp
- 125 litre tank
- Forklift feet



**\$2799**  
HIGH PRESSURE

**CELEBRATING 70 YEARS**



### 2.5HP BELT DRIVE AIR COMPRESSOR

- Heavy-duty industrial pump
- Durable copper wound motor
- 240V, 10amp
- F.A.D. 257 L/min
- Max. pressure 145psi (10 Bar)
- Filter regulator with "Nitto style" coupler
- Large 60L tank



**\$999.00**  
GREAT VALUE!  
TM351-25060



### 3HP BELT DRIVE AIR COMPRESSOR

- Heavy-duty industrial pump
- Durable copper wound motors
- 240V, 15amp
- F.A.D. 328 L/min
- Max. pressure 145psi (10 Bar)
- Filter regulator with "Nitto style" coupler
- Large 90L tank



**\$1429.00**  
GREAT VALUE!  
TM351-30090



### 5.5HP PETROL BELT DRIVE AIR COMPRESSOR

- Powered by Honda GX160 5.5hp engine
- Heavy-duty cast iron cylinder with aluminum head
- F.A.D. 355 L/min
- Max. pressure 145psi (10 Bar)
- Filter regulator with "Nitto style" coupler
- Large 60L tank



**\$2299.00**  
GREAT VALUE!  
TM352-55060



### 10HP 3 PHASE, STATIONARY AIR COMPRESSOR

- Ideal for commercial workshops
- Triple cast iron cylinder pump with aluminium head
- F.A.D. 1143 L/min
- Max. pressure 145psi (10 Bar)
- Large 270L tank



**\$3999.00**  
GREAT VALUE!  
TM353-10270



**\$1070**  
00593

#### Peerless Oil-less 13 Twin tank

- Free Air Delivery: 175LPM
- 2HP Single Phase motor - 10AMP
- 18L Air Receiver
- 1 year total unit warranty



**\$475**  
PB2500

#### Peerless Black 2500 Direct Drive

- Free Air Delivery: 154LPM
- 2.5HP Single Phase motor - 10AMP
- 30L Air Receiver
- 1 year total unit warranty



**\$1089**  
PB14000

#### Peerless Black 14000 Belt Drive

- Free Air Delivery: 220LPM
- 2.5HP Single Phase motor - 10AMP
- 50L Air Receiver • Max PSI: 145
- 1 year total unit warranty



**\$415**  
00287

#### 25M Metal Industrial Retractable Air Hose Reel

- 3/8" x 25M Rubber coated PVC air hose
- Full steel construction - powder coated
- 300PSI Working pressure • 1/4" BSP fittings
- 1 year total unit warranty



**\$1549**  
00092

#### P13 Electric

- Free Air Delivery: 240LPM
- 2.5HP Electric motor - 10AMP
- 48L Air Receiver
- Fitted water trap filter regulator
- Warranty: 5 year pump warranty



**\$2849**  
00105

#### PHP15 High Pressure

- Free Air Delivery: 300LPM
- High pressure for truck tyre inflation
- 3.5HP Electric motor - 15AMP
- 110L Fatboy Air Receiver
- Warranty: 5 year pump warranty



**\$17,325**  
HDD10V5HP-FF

#### 10HP Variable Speed Full Feature Screw Compressor

- Free Air Delivery: 1000LPM
- High pressure for truck tyre inflation
- 99% Duty cycle for constant use
- Fitted refrigeration air dryer
- 200L Air Receiver
- Warranty: 1 year total unit



**GENERATORS, PRESSURE WASHER & VICES**

www.dunlite.com.au



**\$990**  
NEW PRODUCT

**WC**  
WELLING & CROSSLEY

**3.75 kVA Petrol E/Start Generator**  
WC-P3750

- Euro 5 emission compliant
- Automatic Voltage Regulator
- Long range 15L petrol tank
- Wheels, handles & battery included



EURO 5

**8.75 kVA E/Start Generator**  
WC-P8750

- Euro 5 emission compliant
- Automatic Voltage Regulator
- Long range 25L petrol tank
- Wheels, handles & battery included

**\$1695**  
NEW PRODUCT

**WC**  
WELLING & CROSSLEY



EURO 5

**5.8 kVA Petrol Generator**  
DGUH5S-2

- Honda GX340 recoil engine
- Euro 5 emission compliant
- Italian NSM alternator



POWERED by HONDA

EURO 5

**\$2249**  
GREAT VALUE

**7 kVA Welder Generator**  
DGWGH7S-2

- Honda GX390 recoil engine
  - 200 Amps welder, 240V
- OPTIONAL P/N: 10-WELD-LEADS-08 \$349



POWERED by HONDA

EURO 5

**\$3249**  
HOT BUY!

**PT70SS PLUS**

- Radiant diesel heater (21KW, 70000 BTU)
- Heating area capacity 200m<sup>2</sup> (approx.)
- Fuel tank capacity 15 litres
- Non continuous spark for extremely quiet operation
- Diesel consumption 1.9 lt./h (7hrs)
- Thermostat control for maximum efficiency
- Available with optional Trolley

P/N: 8.700.0001



**\$847**  
RED HOT DEAL!

PT70SS PLUS TROLLEY

PT70SS PLUS PICTURED WITH OPTIONAL TROLLEY, \$121 P/N: PT70TWK

**MAINE 1409 XP**

- 2400 PSI Operating pressure
- 9 LPM flowrate
- 2.40KW Universal 240V
- Industrial Spray Lance & Gun
- Suction and Delivery Stainless Steel Valves
- Integrated Detergent Suction with External Suction Hose
- 10 Metre R1 Steel Braided High Pressure Hose

P/N: 8.673.0012



SIMPLY STRONGER

www.lavorwash.com.au

TradeSmart  
MATES RATES!

**FF70**

- Diesel Forced Air Heater
- 70,000 BTU
- Heating Area 158sqm
- Weight 12 Kgs
- Fuel tank 19 litres
- Operating Hours 9hrs
- Thermostat controlled

P/N: 8.700.0003



**\$599**  
BEST PRICE!

**FF175**

- Diesel heater
- 175,000 BTU (51.3KW) of heat
- Heating area 400sqm
- Fuel tank 49 litres
- Operating hours 10hrs
- Thermostat controlled

P/N: 8.700.0005



BOTH FAN FORCED

**\$869**  
POWERFUL HEAT!

**ITM PETROL PRESSURE WASHER**

- 6.5hp Industrial grade engine
- 3200psi Max. pressure
- 9.5L per minute max. flow rate
- Maintenance-free three piston axial pump with aluminium head
- Puncture proof solid treaded wheels
- Heavy-duty powder coated frame with non-marking rubber bumper
- 1.6L On-board soap tank
- 5 Quick connect spray tips
- 2-Year trade warranty

**\$739.00**  
GREAT VALUE!

TM540-3200



**ITM PETROL PRESSURE WASHERS**

- High quality Honda engines
- Renowned Annovi Reverberi pumps
- EPA & EMC certified
- Puncture proof solid treaded wheels
- Heavy-duty powder coated frame
- Quick connect hoses
- Quick connect spray tips
- 2-Year trade warranty
- 3-Year Honda engine warranty

POWERED by HONDA



Engine	5.5hp GP160	6.5hp GX200	13hp GX390
Max. Pressure	2500psi	3200psi	4200psi
Max. Flow Rate	8.7 L/min	9.5 L/min	15.1 L/min
Hose Length	7.6m	10m	15m
Part No.	TM542-2500	TM542-3200	TM542-4200
Price	\$1,199.00	\$1,499.00	\$2,599.00



**ITM 150MM TOW BAR HITCH VICE**



- Jaw width 150mm
- Jaw opening 120mm
- Jaw depth 127mm
- Quickly and easily mounts to any 2" tow hitch
- Also bench mountable (148mm jaw opening)
- Extra heavy-duty hardened steel jaws
- Integrated anvil for shaping and beating
- 12.74kg

**\$249.00**  
GREAT VALUE!  
TM113-150

**ITM FABRICATED STEEL BENCH VICES**

- Precision machined knurled jaws with V-Groove
- Straight jaw
- Large diameter screw
- Extra heavy-duty
- Precise sliding jaw



Jaw Width: 100mm  
Weight: 10.5kg  
**\$199.00**  
GREAT VALUE!  
TM102-100

Jaw Width: 125mm  
Weight: 18.5kg  
**\$369.00**  
GREAT VALUE!  
TM102-125

Jaw Width: 150mm  
Weight: 22.6kg  
**\$399.00**  
GREAT VALUE!  
TM102-150

# HOT DEALS STOREWIDE!

WORKSHOP

## Abbott & Ashby

Abbott & Ashby bench vices are made from a high quality cast iron base and have been designed with the true professional in mind.

### Industrial Bench Grinders

- Powerful Induction Motors
- 36 and 60 grit 25mm wide Aluminium Oxide grinding wheels for fast removal of material
- Wide wheel guards for greater user protection
- 'Sealed for life' ball bearings for prolonged life
- **BONUS** Crimped Wheel 200 x 25mm AAWB/200

Part Number	Size (in/mm)	Amps	Watts	Weight (kg)
ATBG600/8	8"/200	3.8	600	23



RRP  
**\$299<sup>00</sup>**

### Finishing Attachment

- Fits most 6 & 8" bench grinders.
- 915 x 50mm (36 x 2") 240 grit belt.
- 178mm (7") diameter 100 grit disc
- 89 (3.5") contact wheel
- **BONUS 5 Pack** Assorted Belts 50 x 915mm
- Part Number AA362 & AAPACK50/915-5



RRP  
**\$249<sup>00</sup>**

### Heavy Duty Pedestal

- The pedestal is designed to support both 150mm & 200mm bench grinders.
- Easy to assemble with included tools
- Bucket holder on front for storage
- Part Number ATPED-HDK



RRP  
**\$185<sup>00</sup>**



## Holemaker

Drilling Solutions By ITM®

### PRO 35 MAGNETIC BASE DRILL

- Quality, Compact & Robust European Made Machine
- Lightweight, only 10kg! Ideal for onsite & overhead tasks
- Capacity (diameter) 35mm
- Capacity (depth) 52mm
- Gravity feed coolant system with magnetically attached bottle
- Dual rail slide system
- Comes complete in plastic carry case



**\$1149<sup>00</sup>**  
GREAT VALUE!  
HMPRO35



Scan to view this machine in action



Watch Video

## ITM 35MM COLD CUT T.C.T. SAW

- Saves time & money giving cool cuts that need little to no finishing, eliminating any need for grinding or cool down time
- Fully enclosed retractable guard increases user safety
- Cuts through steel up to 120mm x 120mm
- Offers an accurate, fast & clean cold cut
- Pipe vice attachment
- 3hp 240V motor, 1450rpm
- 90° - 45° swivel vice
- Supplied with T.C.T. mild steel blade



Scan to view this machine in action



Watch Video

**\$899<sup>00</sup>**  
GREAT VALUE!  
S14

## WORK SHARP SHARPENERS

### WHETSTONE KNIFE SHARPENER

- Dual-grit sharpening water stone for knives and fine edge tools
- Premium 1000 grit and 6000 grit aluminium oxide sharpening stone creates incredibly sharp edges
- Sharpening base provides a stable platform and increased water control for less mess and faster clean up
- 17° and 20° removeable sharpening guides



**\$85<sup>00</sup>**  
GREAT VALUE!  
WSBCHWHT-I

## WORK SHARP SHARPENERS

### PRECISION ADJUST KNIFE SHARPENER

- Sharpening angle can be easily adjusted from 15° to 30° in 1° increments to sharpen every knife you own
- 320 grit & 600 grit diamond plates to quickly restore a sharp edge, and a fine grit ceramic stone to hone an incredibly keen edge on any knife

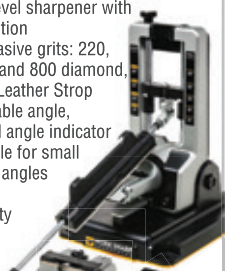


**\$139<sup>00</sup>**  
GREAT VALUE!  
WSBCHPAJ-I

## WORK SHARP SHARPENERS

### PRECISION ADJUST PRO KNIFE SHARPENER

- Professional-level sharpener with metal construction
- Includes 7 abrasive grits: 220, 320, 400, 600 and 800 diamond, Fine Ceramic, Leather Strop
- 15-30° Adjustable angle, includes digital angle indicator
- Small knife table for small 'pen knives' to angles as low as 15°
- 3-Year Warranty



**\$549<sup>00</sup>**  
GREAT VALUE!  
WSBCHPAJ-PRO

## WORK SHARP SHARPENERS

### KEN ONION EDITION KNIFE & TOOL SHARPENER

- 240V Electric knife sharpener
- The 3/4" x 12" premium, flexible engineered abrasive belts sharpen virtually any shape or type of knife
- The sharpening guide is fully adjustable in 1° increments from 15° to 30°
- Variable speed control 6000 - 14000rpm



**\$450<sup>00</sup>**  
GREAT VALUE!  
WSKTS-KO

## ITM

### PEDESTAL DRILLS

- Quality casting, construction & componentry
- Emergency stop NVR safety switch
- Chuck safety guard
- Drill chuck & arbor

- 16mm capacity
- 16mm B16 chuck
- #2 MT Spindle
- 3/4hp, 240V motor
- 16 speed
- 1580mm height
- 50kg weight

**\$595<sup>00</sup>**  
GREAT VALUE!  
TD1316F



- 20mm capacity
- 20mm B22 chuck
- #3 MT Spindle
- 1hp, 240V motor
- 12 speed
- 1600mm height
- 64kg weight

**\$749<sup>00</sup>**  
GREAT VALUE!  
TD1420F



- 25mm capacity
- 20mm B22 chuck
- #3 MT Spindle
- 2hp, 240V motor
- 12 speed
- 1710mm height
- 101kg weight

**\$1195<sup>00</sup>**  
GREAT VALUE!  
TD1825F



- 32mm capacity
- 20mm B22 chuck
- #4 MT Spindle
- 2hp, 240V motor
- 12 speed
- 1710mm height
- 114kg weight

**\$1449<sup>00</sup>**  
GREAT VALUE!  
TD2032F



## ITM



### HEAVY-DUTY BENCH GRINDER STAND

For use with most 150mm, 200mm and 250mm BENCH GRINDERS

\*Parts tray & bench grinder not included

Part No. TM403-016



Heavy-duty steel construction with a powder coat finish and 860mm work height



Mount for parts bin / water tray

# FOLLOW US ON FACEBOOK

## DRILLING

### PHILLIPS POWER BITS



Part No.	Size	Length (mm)	Pack Qty.	Price
01120201M	PH1	50	2	\$4.95
01120202M	PH2	50	2	\$4.95
01120502M	PH2	50	5	\$11.00
04221502M	PH2	50	15	\$24.95
01120203M	PH3	50	2	\$4.95

### SLOT POWER BITS



Part No.	Size	Length (mm)	Pack Qty.	Price
02620207M	8-10	50	2	\$3.95
02620208M	10-12	50	2	\$3.95
02620239M	0.8 x 5.5	50	2	\$3.95
02660139M	0.8 x 5.5	150	1	\$4.95
02660141M	1.0 x 6.0	150	1	\$4.95

### 1/4" IN-HEX POWER BITS



Part No.	Size	Length (mm)	Pack Qty.	Price
02720233M	3mm	50	2	\$4.95
02720234M	4mm	50	2	\$4.95
02720235M	5mm	50	2	\$4.95
02720236M	6mm	50	2	\$4.95

### SQUARE POWER BITS



Part No.	Size	Length (mm)	Pack Qty.	Price
01320201M	SQ1	50	2	\$4.95
01320202M	SQ2	50	2	\$4.95
04221522M	SQ2	50	15	\$24.95
01320203M	SQ3	50	2	\$4.95
01340102M	SQ2	100	1	\$4.50



**18-38MM**  
23/32-1.1/2" Part No. 2210-1838  
**8-22MM**  
5/16-7/8" Part No. 2210-822

**CHAMFER AND DE-BURR BOLTS, PIPE, THREADED ROD, BAR AND DOWELS. M2-HSS FOR EXTREME TOOL LIFE.**

Create a perfect chamfer on ferrous and non-ferrous metals including hardened steels, timber, fibreglass and plastics.

**E-Z Chamfer**



**\$135.00**  
2210-1838

**\$69.00**  
2210-822



**\$75.00**  
8050-S5

**saber**

Saber Tungsten Steel Intermediate Tap and Button Die Set.

Saber Metric Coarse Intermediate Tap and HSS Tapping Drill Set. M12x1.75, M10x1.50, M8x1.25, M6x1.00, M5x0.80, M4x0.70, M3x0.50.



**\$319.00**  
8050-S1

**sutton**

Superior Since 1917



**FN**

**HSS Countersinks**

- For use in steel, cast iron, brass and aluminium.

Size	P/N	Price Inc. GST
8.3mm	107CS0083	\$12.00
12.4mm	107CS0124	\$16.00
20.5mm	107CS0205	\$39.00



**\$66.00**  
INC GST  
P/N: 107RAD001

**Right Angle Drill Attachment**

- Turn your power drill into an angle driver
- Includes Screwdriver Bits: PH2x25, PH2x50, R2x50, Hex 5x50



**\$74.00**  
INC GST  
P/N: 107RAD370

**7pc Mini Angle Driver Set**

- Quickbits Mini Angle Driver
- 6x25mm insert bits: 3xPH2, 1xSL5, 1xH5, 1xR2
- Accepts 1/4" hex shank bits

**sutton**

Superior Since 1917



**\$185.00**  
INC GST  
P/N: 165399200

**200pc HSS Bright Drill Set**

- Metric Sizes: 1.0 - 6.0mm x 0.5mm rises + 3.2, 4.2, 8.0, 10.0 & 12.0mm
- Imperial Sizes: 5/64 - 7/32 x 1/64 rises + 1/4, 5/16, 3/8 & 1/2



**\$145.00**  
INC GST  
P/N: 149060006

**25pc HSS-Cobalt Drill Set + BONUS Countersink**

- Metric sizes: 2.0 - 13.0mm
- Bonus 16.5mm Countersink



**\$139.00**  
INC GST  
P/N: 15080WS3M

**25pc HSS-TiN Drill Set**

- For increased wear resistance delivering 3X longer life
- 1.0 - 13mm x 0.5mm rises



FACEBOOK.COM/TRADESMARTINDUSTRIAL

DRILLING

sutton

Superior Since 1917



**11pc Bi-Metal Cobalt Holesaw Maintenance Set**

- Industrial quality
- 19 - 76mm

**\$199<sup>00</sup>**  
INC GST  
P/N: H125 BM3



**3pc HSS Step Drill Set**

- For use in sheet metal, aluminium, plastic and fibreglass.
- Range 4-12, 9 steps
- Range 4-20, 9 steps
- Range 4-30, 14 steps

**\$239<sup>00</sup>**  
INC GST  
P/N: D504 SET3



**5pc Carbide Burr Set**

- Double Cut
- 3/8" Cylindrical (Square)
- 3/8" & 1/2" Cylindrical (Radius) & Tree (Radius)
- 1/4" Shank

**\$319<sup>00</sup>**  
INC GST  
P/N: B900 SCB5

Alpha

WHITE POINTER

Alpha



**11 Piece Plumbers White Pointer Holesaw Kit**

- 19, 22, 30, 35, 44, 51 & 57mm holesaws

**\$195<sup>00</sup>**  
INC GST  
HSKPLV11



**13 Piece Tradies White Pointer Holesaw Kit**

- 16, 20, 22, 25, 32, 40, 51, 54, 64 & 92mm holesaws

**\$189<sup>00</sup>**  
INC GST  
HSKTRW13



**8 Piece TurboBORE Spade Bit Set**

- 1/4" Hex Shank prevents slipping in chuck

**\$45<sup>00</sup>**  
INC GST  
TS08-SET8



**5 Piece 4 Cutter Auger Bit Set**

- 4x faster than standard spade bits

**\$73<sup>95</sup>**  
INC GST  
TS4C-SET5

Alpha **ONSITE+**

Alpha



**10 Piece ONSITE+ Impact Step Tip Drill Set**

- Sizes: 4.0 - 12.0mm

**\$199<sup>99</sup>**  
INC GST  
SM10ST



**25 Piece Gold Series Metric Drill Set**

- 1.0 - 13.0mm in 0.5mm increments

**\$199<sup>00</sup>**  
INC GST  
SM25PB



**29 Piece Gold Series Imperial Drill Set**

- 1/16 - 1/2" in 1/64" increments

**\$229<sup>00</sup>**  
INC GST  
SI29PB



**5 Piece Reduced Shank Metric Drill Set**

- 14, 16, 18, 22 & 25mm

**\$399<sup>99</sup>**  
INC GST  
RSM5

sutton

Superior Since 1917



**BLUE BULLET**

**\$199<sup>00</sup>**  
INC GST  
P/N: D102 SM3

**25pc Blue Bullet Drill Set**

- 1.0 - 13.0 x 0.5mm
- Blue surface finish for ferrous applications
- Made from M2 HSS



**BLUE BULLET**

**\$225<sup>00</sup>**  
INC GST  
P/N: D102 S3

**29pc Blue Bullet Drill Set**

- 1/16 - 1/2 x 1/64 rises
- Blue surface finish for ferrous applications
- Made from M2 HSS



**CO3ALT**

**\$458<sup>00</sup>**  
INC GST  
P/N: D109 SM3

**25pc Cobalt Drill Set**

- 1.0 - 13.0 x 0.5mm
- 135° Split point
- Ideal for cast iron, bronze, hard seel & stainless steel
- Made from HSS Co.



FREIGHT CHARGES MAY APPLY



# SHOP SMART - BUY SMART

## DRILLING, CUTTING, ABRASIVES & TAPE

sutton

Superior Since 1917



**\$139<sup>00</sup>**  
INC GST  
P/N: D202 LH10M

### 10pc Left Hand Cobalt Drill Set

- 1.0 - 10.0 x 1.0mm
- Suitable for general-purpose drilling and can also be used to drill out broken bolts



### 14pc ISO Straight Flute Tap & Drill Set

- Intermediate Taps: M3, M4, M5, M6, M8, M10, M12
- Drills: 2.5, 3.3, 4.2, 5.0, 6.8, 8.5, 10.2mm

**\$199<sup>00</sup>**  
INC GST  
P/N: T385 0014



**\$85<sup>00</sup>**  
INC GST  
P/N: M603 S20L

### 10pc Screw Extractor Set

- Screw Extractors: # 1-# 5
- Left Hand Cobalt Drills: 2.0, 3.0, 4.0, 5.5, 7.5mm

sutton

Superior Since 1917



### BLUE BULLET

**\$199<sup>00</sup>**  
INC GST  
P/N: D102 SM3

### 25pc Blue Bullet Drill Set

- 1.0 - 13.0 x 0.5mm
- Blue surface finish for ferrous applications
- Made from M2 HSS



### BLUE BULLET

**\$225<sup>00</sup>**  
INC GST  
P/N: D102 S3

### 29pc Blue Bullet Drill Set

- 1/16 - 1/2 x 1/64 rises
- Blue surface finish for ferrous applications
- Made from M2 HSS



### COBALT

**\$458<sup>00</sup>**  
INC GST  
P/N: D109 SM3

### 25pc Cobalt Drill Set

- 1.0 - 13.0 x 0.5mm
- 135° Split point
- Ideal for cast iron, bronze, hard seel & stainless steel
- Made from HSS Co.

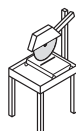


Available in 50x915mm  
40# **280622** \$6.20 60# **280623** \$5.50  
80# **280624** \$5.50 120# **280665** \$5.00

### CS416Y Zirconia linishing belts - 50x915mm

Very high aggressiveness and abrasive performance. Long service life also when used on materials that cause clogging.

**\$5<sup>00</sup>**  
PRICED FROM...

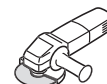


**\$159<sup>00</sup>**  
PRICED FROM...

350mm - **336221** - \$159.00  
400mm - **347486** - \$219.00

### DT350U EXTRA Segmented blade

Product with laser-welded standard segments for universal use on general construction materials. Smooth, fast and low-vibration cutting with good service life.



**\$139<sup>00</sup>**  
P/N: 325378

125mm

### DS600B Diamond cup grinding wheel

Double row cup grinding wheel for machining concrete and abrasive materials. Efficient dust extraction. Long service life.



### NORTON Grey Aluminium Oxide Grinding Wheel



FAST SHARPENING

**\$37<sup>95</sup>**  
EACH  
GREAT VALUE!

66253130429 200 x 25m - Crse/Med  
66253130430 200 x 25m - Med  
66253130582 200 x 25m - Med/Fine

- Suitable for general purpose grinding applications of steel and other ferrous metals

### NORTON Metalite Cloth Handy Rolls



CONFORMABLE

**\$69<sup>00</sup>**  
EACH  
HOT DEAL!

66623320799 50mm x 50m  
• 50mm x 50 metre  
• In Grits P60 - P320  
• Convenient dispenser  
• DIY or workshop

### BEAR General Purpose Electrical Tape



**\$2<sup>95</sup>**  
EACH  
GREAT BUY!

STRONG ADHESIVE

- 18mm x 20m
- Made from PVC to provide excellent stretch, conformability & durability
- Designed for insulating and joining electrical wiring
- Available in assorted colours

## Ultra-Thin Cut-Off Wheels



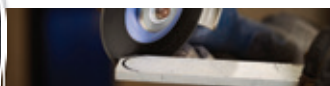
- Save time & money
- Wheel lasts longer
- Consistent quality
- Reduced burr
- Free of iron, sulphur & chlorine



A/N.	Size mm (inch)	Price
61341112	125 (5") x 1.0	\$2.50
61341122	125 (5") x 1.6	\$3.20



- No clogging up on soft or tough aluminium
- Special abrasive mixture (no fillers)
- No need to use waxes or oils
- Can be welded immediately



A/N.	Size mm (inch)	Price
61341115	125 (5") x 1.0	\$5.50
61341225	125 (5") x 1.6	\$5.20

## 5pc Engineer File Sets



- Contains:
- 1x Hand
  - 1x Half Round
  - 1x Round
  - 1x Square
  - 1x 3 Square



- Long tool life
- Excellent surface quality
- Cut 1 - cross cut for coarse stock removal and roughing
- Cut 2 - cross cut for universal roughing and finishing

A/N.	Length mm	Cut	Price
11801531	200	Cut 1 - Bastard Cut	\$79.00
11801542	250	Cut 2 - 2nd Cut	\$89.00

## 3pc ALLROUND Burr Sets 1/4" Shank

- One cut, all materials
- Stock removal rate is up to 30% higher on steel than burrs with a conventional cross cut
- Reduced vibration & less noise



- Contains:
- 1x Cylindrical End
  - 1x Cylindrical Radius
  - 1x Tree Radius

\* Allround burrs in 1/4" shank are labelled as omni-cut (USA Branding)

Head Size 1/4"  
\$105<sup>00</sup>  
A/N.: 26001045



Head Size 1/2"  
\$195<sup>00</sup>  
A/N.: 26001046



## CHAIN SHARP CS-X Chain Saw Sharpener



- Saw tooth & depth gauge sharpen in one operation
- Easy to maintain the correct filing angle
- Excellent for manual sharpening of saw chains
- Extends the operating life of the saw chain



\$74<sup>00</sup>  
GREAT VALUE!

- Contains:
- 1x Sharpening Device
  - 1x Depth Gauge File
  - 2x Chainsaw Files

A/N.	Chain Pitch	Size mm (inch)
18600742	1/4" Low Profile	3.2 (1/8")
11098040	3/8" Low Profile	4.0 (5/32")
11098048	.325	4.8 (3/16")
11098051	3/8" Stand	5.16 (13/64")
11098055	.404	5.5 (7/32")



## POWER TOOLS

# Makita®

# WHEN POWER MEANS BUSINESS®

**DLX1509TX1 \$4,739.00**
**LXT 18V Brushless  
15 Piece Combo Kit**

Kit includes: DHP486Z, DTD154Z, DGA504Z, DHS680Z, DHR242Z, DJR187Z, DTW300Z, DTW1001Z, DJV182Z, DKP181Z, DTM51Z\*, DUB185Z\*, DCL180Z\*, DMR108N, DML805, 4 x BL1850B, DC18RD & 2x carry bag  
\*Brushed Tool


**1910N6-8 \$309.00**
**XGT 40V Max High Output  
4.0Ah Battery**

- High Output battery, designed to produce a 35% increase in power versus the standard 4.0Ah battery
- Battery runs cooler maintaining performance under continuous heavy load
- Digital communication between the tool & battery for optimised performance


**DLX2455G \$799.00**
**LXT 18V Brushless  
2 Piece Combo Kit**

Kit Includes: DHP486Z, DTD172Z, 2 x BL1860B, DC18RC & carry case


**DK0139G202 \$1,429.00**
**XGT 40V Max Brushless  
2 Piece Combo Kit**

Kit includes: TW001GZ, GA013GZ, 2x BL4040, DC40RA & tote bag (832319-7)


**DUS158Z \$419.00**
**LXT 18V 15L Backpack Sprayer**

- 15L tank with ergonomic backpack design
- 600mm lance with dual cone and flat fan nozzles
- Up to 7.5 hours continuous operation on a 6.0Ah battery


**DK0191G601 \$3,139.00**
**XGT 40V Max Brushless  
6 Piece Combo Kit**

Kit Includes: HP001G, TW007G, GA013G, JR002G, HR008G, HS003G, 2x BL4040, DC40RA & TOOL BAG (832367-6)


**DUH507CT \$369.00**
**LXT 18V Hedge Trimmer  
500mm Kit**

- Includes 1 x 5.0Ah battery & same time dual port standard charger
- Lightweight at 3kg with battery
- 15mm maximum cutting diameter


**UV001GZ \$1,029.00**
**XGT 40V Max Brushless  
380mm Lawn Scarifier**

- Working depth of +5mm down to -12mm for a range of applications
- Vertical cutting and de-thatching blades as standard
- 1.7kW Max output power to power through thick grasses


**DUC150SF \$499.00**
**LXT 18V Brushless  
150mm Pruning Saw Kit**

Kit Includes: 1 x 3.0Ah battery and optimum charger


**HW001GZ \$1,239.00**
**XGT 40V Max Brushless  
Pressure Washer**

- Self priming function
- Adjustable pressure function with 3 modes
- Max flow rate of 420L/h





# metabo 100 YEARS

## REDEMPTION OFFERS FOR CORDLESS PURCHASES \$699 AND OVER

For details, terms, conditions or to redeem, scan the QR code or visit [metabo.com/redemptions](http://metabo.com/redemptions).



### 18V 3-PIECE KIT

AU68308200  
MET18BL3SB1HD5.5HP  
**BRUSHLESS**

- 130 Nm Hammer Drill SB 18 LTX BL I
- 200 Nm Impact Driver SSD 18 LTX 200 BL
- 125 mm Angle Grinder WB 18 LT BL 11-125 QUICK
- 5.5 Ah LiHD Battery Pack
- ASC 55 Air-Cooled Charger
- Heavy Duty Tool Bag



**\$699**  
GREAT VALUE!

REDEMPTION 1

### 12V/18V RADIO/CHARGER

600779190  
RC 12-18 32W BT DAB+

- Powerful 32 W speakers
- Can be paired with second RC 12-18 32W BT DAB+
- FM/DAB+ with 8 memory locations each
- Battery or mains powered
- Charges Metabo batteries
- Charges mobile devices via USB-C cable or induction
- Connect via Bluetooth or AUX-IN
- IP 54 - splash/dust/impact-proof
- Connects to metaBOXes



**\$439**  
GREAT VALUE!

### 18V 2-PIECE KIT

AU68205650  
MET18MX2SB2HD5.5HE  
**BRUSHLESS**

- 1750 Nm Impact Wrench SSW 18 LTX 1750 BL
- Grease Gun FP 18 LTX (450 g)
- 2 x 5.5 Ah LiHD Battery Packs
- ASC 55 Air-Cooled Charger
- Heavy Duty Tool Bag



**\$999**  
GREAT VALUE!

REDEMPTION 2

#### BONUS

- 5.5 Ah LiHD Battery Pack



#### BONUS

- 4.0 Ah LiHD Battery Pack



#### BONUS

- 18 V Angle Grinder



**BRUSHLESS**

### SAW HORSE SET

626990000  
MAB 82



- Compact, foldable & adjustable for easy transport & set-up
- Robust & stable
- Holes for locking or screw clamps
- Suitable for use as a mitre saw stand

**\$269**  
GREAT VALUE!

### 18V INFLATOR KIT

AU60079400  
AK 18 MULTI 1 HD 4.0 K

- High-pressure function for inflating balls & tyres
- High-volume function for fast filling of air mattresses & pool inflatables
- Auto-stop target pressure
- Powered by 18 V battery pack / 12 V car cable
- Large display
- Bright LED light



**\$299**  
GREAT VALUE!

- Includes:
- Inflator AK 18 MULTI
  - 4.0 Ah LiHD Battery Pack
  - ASC 55 Air-Cooled Charger

### 2 x 18V CHAINSAW KIT

AU60161300  
MS 36-18 LTX BL 40 5.5 DUO K



- Includes:
- 400 mm Chainsaw MS 36-18 LTX BL 40
  - 2 x 5.5 Ah LiHD Battery Packs
  - ASC 145 DUO Air-Cooled Fast Charger

**\$769**  
GREAT VALUE!

REDEMPTION 1

### WALL CHASER & 240V H-CLASS VACUUM CLEANER COMBO

AU60010080  
MFE 40 ASA 30 H PC COMBO



- 125 mm Wall Chaser MFE 40
- 1900 W
  - Adjustable cutting depth 10 - 40 mm
  - Possible groove widths 9, 15.5, 22, 28.5 & 35 mm

- 30 L Wet & Dry Vacuum Cleaner ASA 30 H PC
- 1200 W
  - Dust Class H
  - Auto-start/stop power socket
  - Automatic suction stop when liquids reach maximum fill level
  - PressClean manual filter cleaning
  - 4.0 m x Ø32 mm Hose
  - 225 hPa (mbar) vacuum
  - 4200 L/min air output

**\$1999**  
GREAT VALUE!

### 1700W ANGLE GRINDER KIT

AU60053400  
WEA 17-125 Q SB GHDD



- 125 mm Angle Grinder WEA 17-125 QUICK
- Mechanical safety clutch
  - Auto Balancer
  - Quick Locking Nut
  - Soft Start
  - Restart & Overload Protection
  - Constant speed under load

**\$399**  
GREAT VALUE!

#### BONUS

- 10 x Cutting Discs 125 x 1.0 mm
- Universal Diamond Cutting Disc 125 mm
- Clip-on Cutting & Extraction Guards
- Heavy Duty Tool Bag



#### SPECIAL REDEMPTION

- 75 Nm Hammer Drill SB 18 LT BL
- 200 Nm Impact Driver SSD 18 LT 200 BL
- 2 x 5.2 Ah Li-Power Battery Packs
- ASC 55 Air-Cooled Charger
- metaBOX 145 L



# HOT DEALS STOREWIDE!

## POWER TOOLS



Nothing but **HEAVY DUTY™**



**AUTHORISED  
RETAIL PARTNER**

PN: M18FPP2A3502C

### M18 FUEL™ 2 PIECE POWER PACK 2A3

BONUS VIA REDEMPTION  
M18B5

M18 FUEL  
POWER TOOLS

**\$748.00**

REDEMPTION OFFER!



REDEMPTION  
1 X M18™  
REDLITHIUM™  
5.0AH  
BATTERY

REDEEM

PN: M18FPP4A3503B

### M18 FUEL™ 4 PIECE POWER PACK 4A3

BONUS VIA REDEMPTION  
M18B5

**\$1468.00**

REDEMPTION OFFER!



REDEMPTION  
2 X M18™  
REDLITHIUM™  
5.0AH  
BATTERY

REDEEM

PN: M18FPP8A3503B

### M18 FUEL™ 8 PIECE POWER PACK 8A3

BONUS VIA REDEMPTION  
M18B5

**\$2349.00**

GREAT DEAL!



REDEMPTION  
3 X M18™  
REDLITHIUM™  
5.0AH  
BATTERY

REDEEM

PN: M18CHT24B0

### M18 FUEL™ 24" (610 MM) HEDGE TRIMMER (TOOL ONLY, DUAL BLADE UPDATE)

BONUS VIA REDEMPTION  
M12FHT0

NEW

REDEMPTION  
M12 FUEL™  
HEDGE TRIMMER  
(TOOL ONLY)

REDEEM

**\$479.00**

NEW PRODUCT!



PN: M18FSAGES1250

### M18 FUEL™ ONE-KEY™ 125MM (5") DUAL-TRIGGER BRAKING ANGLE GRINDER WITH DEADMAN PADDLE SWITCH (TOOL ONLY)

NEW

**\$699.00**

NEW PRODUCT!



PN: M18GG-201B

### M18™ CORDLESS 2-SPEED GREASE GUN KIT (1X 2.0AH)



**\$798.00**

GREAT VALUE!

M18

PN: M18FB6

### M18™ REDLITHIUM™ FORGE™ 6.0AH BATTERY



**\$279.00**

NEW PRODUCT!

M18

REDLITHIUM-ION

PN: M18DBSC

### M18™ DUAL BAY SUPER CHARGER



**\$349.00**

NEW PRODUCT!

M18

PN: 48224533

### TIN SNIPS SET 3PK

WITH BONUS 48221516



**\$62.00**

GREAT BUY!

BONUS  
COMPACT SIDE  
SLIDE UTILITY  
KNIFE

PN: 48228201

### ULTIMATE JOBSITE BACKPACK

WITH BONUS  
48222702



BONUS  
2PC DEMO  
SCREWDRIVER  
SET

**\$149.00**

GREAT DEAL!

PN: 48228538

### MOBILE WORK BENCH STEEL TOP 102CM (40")

WITH BONUS 48229508



BONUS  
3/8" DRIVE  
32PC RATCHET  
& SOCKET SET  
METRIC

**\$1590.00**

GREAT DEAL!

PN: 49667015

### SHOCKWAVE™ 1/2" DRIVE METRIC DEEP 6 POINT IMPACT SOCKET 29PC SET

WITH BONUS 48227408



BONUS  
ADJUSTABLE  
WRENCH  
200MM/8"

**\$205.00**

GREAT BUY!

SHOCKWAVE  
IMPACT DUTY

PN: 48892341

### RED HELIX™ COBALT SAE DRILL BIT 29PC SET

WITH BONUS 48899320



BONUS  
JAM-FREE STEP  
DRILL 4-20MM  
9 HOLE

**\$299.00**

GREAT BUY!

# WHEN HEAVY DUTY MATTERS!

POWER TOOLS



Nothing but **HEAVY DUTY™**



**AUTHORISED  
RETAIL PARTNER**

PN: M18FPP6A3503B

**M18 FUEL™ 6 PIECE  
POWER PACK 6A3**

BONUS VIA  
REDEMPTION M18B5

**M18 FUEL**  
DESIGNED TO OUTPERFORM

**\$1799.00**  
REDEMPTION OFFER!



PN: M18FPP5N533P

**M12 & M18 FUEL™ 5 PIECE  
POWER PACK 5N**

**M12**

**M18 FUEL**  
DESIGNED TO OUTPERFORM

**\$1449.00**  
GREAT DEAL!



**REDEMPTION**  
2 X M18™  
REDLITHIUM™  
5.0AH  
BATTERY

**REDEEM**

**LIMITED STOCK AVAILABLE**

PN: M18BPFPCSA0

**M18™ SWITCH  
TANK™ 15 LITRE  
BACKPACK  
CHEMICAL SPRAYER  
WITH POWERED  
BASE (TOOL ONLY)**



**\$499.00**

**GREAT BUY!**

**M18 FUEL**

PN: M18FHZ501B

**M18 FUEL™ HACKZALL™ KIT  
(1X 5.0AH, FOLDING JAB SAW, BAG)**



**\$548.00**

**GREAT DEAL!**

**NEW**

**M18 FUEL**

PN: M12BLR0T0

**M12™ BRUSHLESS  
ROTARY TOOL (TOOL  
ONLY)**



**NEW**

**M12**

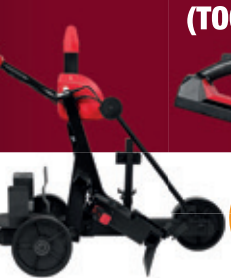
**\$199.00**

**GREAT BUY!**

PN: MXFCOSCG2

**MX FUEL™ 355MM (14")  
CUT-OFF SAW CART GEN 2**

**NEW**



**\$1199.00**

**NEW PRODUCT!**

PN: MXFCOS350G2-0

**MX FUEL™ 355MM (14")  
CUT-OFF SAW GEN 2  
(TOOL ONLY)**

**NEW**



**\$1599.00**

**NEW PRODUCT!**

PN: M12SI-0

**M12™  
SOLDERING  
IRON  
(TOOL ONLY)**

**M18**

**\$198.00**

**GREAT BUY!**



PN: M18FHIW2F120

**M18 FUEL 1/2" HIGH TORQUE  
IMPACT  
WRENCH WITH  
FRICTION RING  
- GEN 3  
(TOOL ONLY)**

**M18 FUEL**  
DESIGNED TO OUTPERFORM



**\$658.00**

**NEW PRODUCT!**

**NEW**

PN: 48324050

**SHOCKWAVE™ PACKOUT™  
100PC SET - ANZ**

WITH BONUS 48220508

**BONUS**  
COMPACT  
MAGNETIC TAPE  
MEASURE 8M



**\$129.00**

**GREAT DEAL!**

**PACKOUT**

PN: 48228442

**MIL PACKOUT 2 DRAWER  
TOOL BOX**

WITH BONUS  
48228410

**REDEEM**  
MIL PACKOUT  
DOLLY



**\$286.00**

**GREAT BUY!**

**PACKOUT**

PN: 48228443

**MIL PACKOUT 3 DRAWER  
TOOL BOX**

WITH BONUS  
48228410

**REDEEM**  
MIL PACKOUT  
DOLLY



**\$286.00**

**GREAT BUY!**

**PACKOUT**

PN: 48228430

**PACKOUT™ ORGANISER**



**\$103.00**

**GREAT BUY!**

**PACKOUT**

NOW AVAILABLE! OFFER VALID FROM 1ST APRIL TO THE 30TH JUNE. REDEMPTIONS Terms and Conditions apply, see website for details. Offers valid during the promotional period 1st April 2024 until 30th June 2024. Online redemption must be claimed by 30th June 2024. Please allow up to 8 weeks for delivery. <https://www.milwaukee.com.au/terms-and-conditions-redemption.html>

FREIGHT CHARGES MAY APPLY



# FOLLOW US ON FACEBOOK



**IMEX** LASER TOOLS  
ACCURATE FOR LIFE



**E60 ROTATING LASER KIT**

**\$849<sup>00</sup>**  
012-E60K



**LX25GP**  
LINE & DOT  
LINE LASER GREEN BEAM

**\$599<sup>00</sup>**  
012-LX25GP

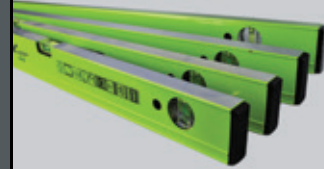


**LX3DG**  
MULTI-LINE LINE  
LASER GREEN BEAM

**\$799<sup>00</sup>**  
012-LX3DG

**\$950<sup>00</sup>**  
012-LX3DG  
Includes LD100 detector

**PURCHASE ANY OF THE LASERS ON THE LEFT AND RECEIVE 3X SPIRIT LEVELS OF YOUR CHOOSING VIA REDEMPTION!**



SCAN HERE TO REDEEM



**NORTON**  
SAINT-GOBAIN



## NORTON Grey Aluminium Oxide Grinding Wheel



FAST SHARPENING

**\$37<sup>95</sup>**  
EACH  
GREAT VALUE!

- 66253130429 200 x 25m - Crse/Med
- 66253130430 200 x 25m - Med
- 66253130582 200 x 25m - Med/Fine

• Suitable for general purpose grinding applications of steel and other ferrous metals

## NORTON Metalite Cloth Handy Rolls



CONFORMABLE

**\$69<sup>00</sup>**  
EACH  
HOT DEAL!

- 66623320799 50mm x 50m
- 50mm x 50 metre
- In Grits P60 - P320
- Convenient dispenser
- DIY or workshop

## BEAR General Purpose Electrical Tape



**\$2<sup>95</sup>**  
EACH  
GREAT BUY!

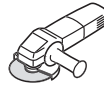
STRONG ADHESIVE

- 18mm x 20m
- Made from PVC to provide excellent stretch, conformability & durability
- Designed for insulating and joining electrical wiring
- Available in assorted colours



**BONUS!**  
Bonus Klingspods  
RRP \$75

100 discs



**\$3<sup>50</sup>**  
P/N: 13402



## A24R SUPRA Grinding disc - 125mm

With optimised recipe for use on steel. Also suitable for use on stainless steel. Large product range

**\$209<sup>00</sup>**  
P/N: 382061



125mm  
369280 - 40#  
369279 - 60#  
369278 - 80#

## SMT974 Ceramic flap disc

Newly developed abrasive for demanding grinding tasks in the steel sector. Optimal tool for edge and weld seam finishing.

**\$15<sup>95</sup>**  
CERAMIC

**geiger**™

## ADJUSTABLE HYDRAULIC STOOL

P/N: GAHS

- 2 lockable wheels
- Metal Sub-frame
- Size: 540L x 390W x 560H MM
- Height Range: 450-560 MM

**\$249**  
150 KG CAPACITY



## UTILITY PARTS TROLLEY

P/N: GT3SP

- Soft PVC swivel wheels (2 lockable).
- Size: 82 x 47 x 105cm

130 KG CAPACITY!

**\$249**  
GREAT VALUE!



## MECHANICS CREEPER

P/N: GCR40

- Size: 1005 x 470 x 135 MM
- Ground Clearance: 45 MM
- Weight: 5.3 Kg

**\$179**  
150 kg MAX LOAD!



## MAGNETIC BROOM

P/N: MB001

- Telescopic main shaft
- Width: 377 MM
- Handle Length: 720-1035 MM

**\$135**  
GREAT VALUE!



**TRADESMART MEMBERS:** ACT: • Fyshwick NSW: • Albury • Banksmeadow • Bega • Beresfield • Broken Hill • Casino • Chipping Norton • Coffs Harbour • Coonamble • Cootamundra • Corowa • Cowra • Erina • Forbes • Goulburn • Gunnedah • Hay • Moorebank • Mudgee • Muswellbrook • Narrabri • Penrith • Silverwater • Tamworth • Tomago • Tumut • West Wyalong • Wetherill Park • Young NT: • Alice Springs QLD: • Blackwater • Bowen • Biloela • Bundaberg • Cairns • Caloundra • Charleville • Charters Towers • Chinchilla • Clermont • Coomera • Hughenden • Longreach • Mareeba • Moranbah • Mount Isa • Proserpine • Rockhampton • Richmond • Roma • Springsure • Stanthorpe • Toowoomba • Tully SA: • Berri • Edwardstown • Kilburn • Naracoorte • Penola TAS: • Derwent Park • Invermay • Ulverstone VIC: • Cobram • Dandenong • Geelong North • Horsham • Laverton Nth • Mildura • Robinvale • Shepparton • Traralgon • Tullamarine WA: • Albany • Bibra Lake • Busselton • Geraldton • Kalgoorlie • Maddington • Moora • Narrogin • Northam • Osborne Park • Port Hedland • Rockingham • Welshpool

• ALL PRICES INCLUDE GST • Some products are subject to plus freight costs where applicable • Some advertised products may not be available at all stores & maybe subject to availability. • Prices are valid while stocks last and we reserve the right to correct any errors or omissions without prior notice • Images shown throughout this catalogue are for illustrative purposes only - some items may vary.

